



# EXPRESS RANCHES HEREFORD EVENT

VOL. IV

10.21.18

1 P.M. ... YUKON, OKLAHOMA



**64 ELITE LOTS SELL...** DONORS ... SHOW HEIFERS ... FALL PAIRS  
SPRING-CALVING SPLIT PAIRS ... SPRING BRED HEIFERS ... EMBRYOS





We invite you to attend our Hereford Event Volume IV Production Sale. We will be offering our best Hereford genetics. We are relatively new to the Hereford breed, but we are strong supporters of the cattle industry and excited to be in the Hereford business. We also look forward to getting better acquainted with our fellow breeders.

We will be offering a cross section of donor females, bred heifers, pairs as well as an exciting group of heifer calves. Our Express Scholarship program on the show heifers is second-to-none and one of the programs we are most proud of.

If we or any of the crew can be of any assistance, don't hesitate to call or email. We hope you can join us in Oklahoma for an exciting Hereford weekend. Thanks for your interest.

Sincerely,

*Bob Funk & Jarold Callahan*



### RANCH STAFF ...

Jarold Callahan, President ..... (405) 590-3061  
Mark Squires, VP of Administration ..... (405) 350-0044  
Kevin Hafner, VP of Operations ..... (405) 641-8100  
Donnie Robertson, VP of Marketing ..... (405) 206-1886  
Miles Shout, Yukon Cattle Manager ..... (405) 269-9219  
Julie Bridges, Mgr. Educational Foundation ..... (405) 971-1888  
Jeff Eckhoff, Shawnee Manager ..... (405) 990-5936  
Roy Middleton, Reproduction Manager ..... (405) 642-1312  
Jason Shepard, R3 Division Manager ..... (405) 245-9627  
Bryan Brewster, Construction Manager ..... (405) 202-0402  
Mike Deniz, Show Cattle Manager ..... (559) 363-1957  
Nathan Campbell, Sale Cattle Manager ..... (740) 255-3591  
Gayle Eckhoff, Angus Records ..... (405) 275-5614

Darcy Reheman, Ranch Accountant ..... (405) 373-3385  
Mica Gibson, Accounting Assistant ..... (405) 350-0044  
Cindy Pribil, Partnership Records ..... (405) 350-0044  
John Prince, Division Manager ..... (405) 532-1488  
Stuart Schultz, Assistant Manager ET Center ..... (405) 354-6769  
Ray Unwin ..... Yukon Cow Herd Manager  
Bryan Duke ..... Yukon Cow Herd  
Michelle Berg ..... Assistant R3 Herdsman  
Chad Elliott ..... Assistant Construction  
Bryan Clyden ..... Grounds Manager  
Dave Cameron ..... Grounds Assistant Manager  
Joey Reich ..... Grounds Assistant Manager

### OKLAHOMA SALE SCHEDULE...

**Sat., Oct. 20** - Buck Cattle Co., Madill, OK, 1:00 p.m. CST

**Sun., Oct. 21** - EXPRESS RANCHES, YUKON, OK, 1:00 p.m. CST

**Sun., Oct. 21** - The Exclusive, El Reno, OK, 5:30 p.m. CST

### EX UPCOMING SALE DATES ...

Purchase Hereford Genetics at these Upcoming EX Events:

**MARCH 1, 2019** ... Express Spring Bull Sale, Yukon, OK  
**MARCH 2019** ... Express Honor Roll Heifer Calf Sale, Yukon, OK



2202 N. 11th Street • Yukon, Oklahoma 73099  
(405) 350-0044 • (800) 664-3977 • [www.expressranches.com](http://www.expressranches.com)



# SALE SCHEDULE...

## SUNDAY, OCTOBER 21, 2018

Noon ... CHB Steak Lunch  
1:00 p.m. ... Express Hereford Event Sale

### HOTELS & AIR TRANSPORTATION ...

Ask for the Express Ranches block of rooms at each hotel.

**Hampton Inn**, Yukon - 4 miles S of ranch.

(I-40 & Garth Brooks Blvd.) • (405) 350-6400

**Fairfield Inn**, Yukon - 4 miles S of ranch.

(I-40 & Garth Brooks Blvd.) • (405) 265-3866

**Best Western**, Yukon - 10 min. from ranch.

(I-40 & Mustang Rd.) • (405) 265-2995

**Comfort Inn & Suites**, Yukon - 10 min. from ranch.

(I-40 & Mustang Rd.) • (405) 577-6500

**La Quinta**, Yukon - 10 min. from ranch.

(I-40 & Mustang Rd.) • (405) 494-7600

**Holiday Inn Express**, Yukon - 4 miles S of ranch.

(I-40 & Garth Brooks Blvd.) • (405) 494-7171

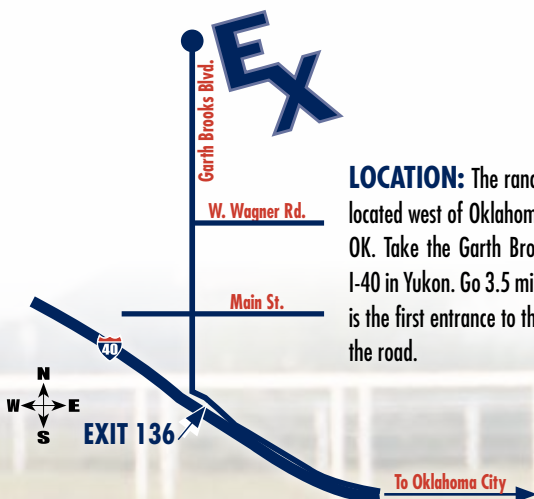
**Hilton Garden Inn**, Oklahoma City - 15 min. from ranch.

(I-40 & Meridian) • (405) 942-1400

**Home2 Suites by Hilton**, Yukon - 10 min. from ranch.

(11510 W. I-40 Service Rd.) • (405) 265-0999

Will Rogers World Airport in Oklahoma City is only 15 min. from the Yukon ranch and is served by most major airlines. For assistance with travel arrangements, please call: Express Travel Service (800) 828-3124 or Express Ranches (800) 664-3977.



**LOCATION:** The ranch and sale headquarters is located west of Oklahoma City just north of Yukon, OK. Take the Garth Brooks exit (Exit 136) off of I-40 in Yukon. Go 3.5 miles north. The sale entrance is the first entrance to the ranch on the east side of the road.

### SALE STAFF ...

Dustin Layton, Auctioneer ..... (405) 464-2455  
Matt Sims, Auctioneer ..... (405) 641-6081  
Doug Paul, *Stock Exchange* ..... (405) 820-3982  
Robbie Schacher, Special Assignment ..... (817) 219-0102  
Jim Boyd, Special Assignment ..... (325) 669-4784  
Juston Stelzer, American Hereford Association ..... (817) 992-7059

### PHOTOGRAPHY...

Miles Shout, Jarold Callahan and Donnie Robertson ..... (405) 350-0044

### SALE-DAY PHONE...

(405) 350-0044

### EPDS ARE CURRENT AS OF 09/12/2018

*All cattle in the Hereford Event sell under the sale terms and conditions of the American Hereford Association.*

### SALE MANAGEMENT ...



DUSTIN N. LAYTON - 405-464-2455

WWW.LAYTONAUCTION.COM

### SALE BROADCAST & ONLINE BIDDING ...

LiveAuctions.TV

Call Brad Fahrmeier for Details - 816-392-9241

To view the sale via the internet, go to [liveauctions.tv](http://liveauctions.tv)





# 90W DAUGHTER



## 1 | EXR MS DOM 8108 ET (DLF,HYF,IEF)

1/4/2018 COW - P43876823 8108 Polled

EFBEEF TFL U208 TESTED X651 ET (DLF,HYF,IEF) EFBEEF FOREMOST U208 (DLF,HYF,IEF)  
**INNISFAIL WHR X651/723 4013 ET (DLF,HYF,IEF)** EFBEEF P606 MABEL R415  
 INNISFAIL P230 T723 (DLF,HYF,IEF) EF F745 FRANK P230 (DLF,HYF,IEF)  
 INNISFAIL 235 R501 ET (DOD)(DLF,HYF,IEF)  
 NJW FHF 9710 TANK 45P (SOD)(CHB)(DLF,HYF,IEF) FHF 8403 STARBUCK 19H (SOD)  
**TH 618 45P MS DOM 90W (DLF,HYF,IEF)** GV 579 VICTORIA 9710 (DLF,HYF,IEF)  
 KBCR P606 MS DOM 618 (DLF,HYF,IEF) PW VICTOR BOOMER P606 (SOD)(DLF,HYF,IEF)  
 KBCR 262D MS DOM 101

CE	BW	WW	YW	Milk	REA	Marb	CHB
-7.7	4.7	75	108	27	0.76	0.39	117

We lead off this year's offering with another direct daughter of the time-tested \$54,000-valued 90W that is owned with Polzin Cattle Co. 8108 is sired by the \$50,000 one-third interest ST Genetics and Mohican West herd bull 4013. She combines exceptional phenotype with a solid EPD profile across the board. When you analyze 8108 you have to appreciate her depth of rib and sweep to her belly yet still possesses a very feminine look with added power. She is sound in structure and may have more earning potential than any of her other siblings we have sold to date.

Several maternal sisters were offered last year commanding \$35,000 for Lot 1, Lot 5 \$17,500, Lot 20 \$9,000, Lot 23 \$8,500 and Lot 4 \$5,500. A set of embryos that would be maternal sibs sired by Kolt Chicago 2004 ET were the high sellers fetching \$1,300 per embryo. 90W continues to produce year in and year out no matter how we mate her which is a true testament of her genetic potency.

Ranks in the top 2% for Marb, top 10% for WW and REA, top 25% for YW and Milk.

## 1A | FOUR EMBRYOS

C STOCKMAN 2059 ET  
**B&C STOCK OPTION 6026D**  
 B&C MISS TOP GUN 2031Z

NJW FHF 9710 TANK 45P  
**TH 618 45P MS DOM 90W**  
 KBCR P606 MS DOM 618

NJW 98S R117 RIBEYE 88X ET  
 C NOTICE ME ET  
 GH ADAMS TOP GUN ET 516T  
 B&C MS CHRISTI 27031

FHF 8403 STARBUCK 19H  
 GV 579 VICTORIA 9710  
 PW VICTOR BOOMER P606  
 KBCR 262D MS DOM 101

SIRE	CE	BW	WW	YW	Milk	REA	Marb	CHB
DAM	-7.7	6.7	55	83	29	0.67	0.11	115
	-7.3	3.7	45	62	30	0.52	0.25	92



**B&C Stock Option 6026D ET\_4C**  
 Sire of Lot 1A



**TH 618 45P**  
**Ms Dom 90W**  
 Dam of Lot 1 & 1A





2

**EXR RITA 8049** (DLF,HYF,IEF)

2/14/2018 COW - P43886549 8049 Polled

NJW 98S R117 RIBEYE 88X ET (SOD)(DLF,HYF,IEF)  
**LCX PERFECTO 11B ET** (DLF,HYF,IEF)  
 WLL ZOEY 3Z (DLF,HYF,IEF)

CRR 109 CATAPULT 322 (DLF,HYF,IEF)  
**FHF 322 RITA 152D** (DLF,HYF,IEF)  
 FHF 9116 RITA 29Z (DLF,HYF,IEF)

SHF RIB EYE M326 R117 (SOD)(DLF,HYF,IEF)  
 NJW 9126J DEW DOMINO 98S (DOD)(DLF,HYF,IEF)  
 TH 122 711 VICTOR 719T (SOD)(CHB)(DLF,HYF,IEF)  
 WLL VENUS 19X  
 CRR 719 CATAPULT 109 (DLF,HYF,IEF)  
 CRR 713 KELLY 0117 (DLF,HYF,IEF)  
 PYRAMID 16W 110T 9116 (DLF,HYF,IEF)  
 FHF 10H RITA 62X ET

CE	BW	WW	YW	Milk	REA	Marb	CHB
-0.1	3.1	61	94	31	0.65	0.02	107

We had the opportunity to purchase the dam of this heifer calf in the 2017 Hoffman Ranch Female Event. 152D was one of the feature lots in the entire offering commanding \$30,000 for one-half interest. Her grandam, 29Z, was the feature Hereford donor and one of the high sellers at \$42,500.

Miles loves the design and power 8049 displays and when you see her in person you will see why. 8049 is really stout with added hip, bone, bell and power an puts it all together in a very eye-appealing package. Her sire, Perfecto, has been gathering steam as breeders are starting to get calves on the ground. Take advantage of this opportunity to acquire this great breeding piece. *Ranks in the top 10% for Milk and REA, top 20% for WW and \$CHB, top 25% for YW.*



**FHF 322 Rita 152D** • Dam of Lot 2



# BELLE AIR DAUGHTERS



**LOT 3A**



**LOT 3B**

Sired by the ever-popular \$600,00 valued 2017 National Western Stock Show Grand Champion Horned Hereford Bull who went on to be Crowned Supreme Champion Hereford, BR Belle Air 6011. His first calf crop has been receiving rave reviews and for good reason as evident in this pair of powerful sisters with added phenotype. Dark red in color, big boned, square hiped and ultra cool fronted. Big time show heifer prospects with attractive EPD profiles.

**3A**

## EXR MISS LEXUS 8149 ET (DLF,HYF,IEF)

2/12/2018 COW - P43899167 8149 Polled

BAR S LHF 028 240 (DLF,HYF,IEF)  
**BR BELLE AIR 6011** (DLF,HYF,IEF)  
BR BELLE 4082 ET (DLF,HYF,IEF)

LSW WCC ABOUT TIME X06 (DLF,HYF,IEF)  
**EXR MISS LEXUS 4203 ET** (DLF,HYF,IEF)  
TCC MISS LEXUS 84 ET (DLF,HYF,IEF)

CHURCHILL SENSATION 028X (SOD)(CHB)(DLF,HYF,IEF)  
CHURCHILL LADY 078X (DLF,HYF,IEF)  
GOLDEN OAK OUTCROSS 18U (SOD)(CHB)(DLF,HYF,IEF)  
BR CSF BRIELLE 8052 ET (DLF,HYF,IEF)  
CRR ABOUT TIME 743 (SOD)(DLF,HYF,IEF)  
WBCC WCC 69P MS RANGELAND U800 (DLF,HYF,IEF)  
SLDK POSEIDON R09 ET  
LCC TWO TIMIN 438 ET (DLF,HYF,IEF)

CE	BW	WW	YW	Milk	REA	Marb	CHB
-2.9	3.6	58	95	26	0.75	0.08	125

Ranks in the top 3% for REA, top 10% for \$CHB, top 20% for WW and YW.

**3B**

## EXR MISS LEXUS 8151 ET (DLF,HYF,IEF)

2/17/2018 COW - P43899169 8151 Polled

BAR S LHF 028 240 (DLF,HYF,IEF)  
**BR BELLE AIR 6011** (DLF,HYF,IEF)  
BR BELLE 4082 ET (DLF,HYF,IEF)

LSW WCC ABOUT TIME X06 (DLF,HYF,IEF)  
**EXR MISS LEXUS 4203 ET** (DLF,HYF,IEF)  
TCC MISS LEXUS 84 ET (DLF,HYF,IEF)

CHURCHILL SENSATION 028X (SOD)(CHB)(DLF,HYF,IEF)  
CHURCHILL LADY 078X (DLF,HYF,IEF)  
GOLDEN OAK OUTCROSS 18U (SOD)(CHB)(DLF,HYF,IEF)  
BR CSF BRIELLE 8052 ET (DLF,HYF,IEF)  
CRR ABOUT TIME 743 (SOD)(DLF,HYF,IEF)  
WBCC WCC 69P MS RANGELAND U800 (DLF,HYF,IEF)  
SLDK POSEIDON R09 ET  
LCC TWO TIMIN 438 ET (DLF,HYF,IEF)

CE	BW	WW	YW	Milk	REA	Marb	CHB
0.1	3.2	62	100	26	0.68	0.24	127

Ranks in the top 3% for REA, top 4% for \$CHB, top 10% for WW and YW, top 15% for Marb.



**BR Belle Air 6011** • Sire of Lots 3A & 3B

**3c**

## FOUR EMBRYOS

UPS SENSATION 2296 ET  
**H DEBERARD 7454 ET**  
RST GAT NST Y79D LADY 54B ET

LSW WCC ABOUT TIME X06  
**EXR MISS LEXUS 4203 ET**  
TCC MISS LEXUS 84 ET

CHURCHILL SENSATION 028X  
UPS JT MISS NEON 7811 ET  
WORR OWEN TANERAY Y79D ET  
H H LADY MAXIMUM 111 ET  
CRR ABOUT TIME 743  
WBCC WCC 69P MS RANGELAND U800  
SLDK POSEIDON R09 ET  
LCC TWO TIMIN 438 ET

SIRE	CE	BW	WW	YW	Milk	REA	Marb	CHB
DAM	-3.7	5.3	64	103	24	0.96	0.16	138
	-1.5	4.0	54	83	22	0.67	-0.05	121

Guarantee 1 pregnancy if put in by a certified embryologist.





**LOT 4A**

**4A**

## EXR LEXUS 8131 ET (DLF,HYF,IEF)

1/19/2018 COW - 43899152 8131 Horned

BAR S LHF 028 240 (DLF,HYF,IEF)  
**BR BELLE AIR 6011 (DLF,HYF,IEF)**  
 BR BELLE 4082 ET (DLF,HYF,IEF)

LSW WCC ABOUT TIME X06 (DLF,HYF,IEF)  
**EXR LEXUS 4208 ET (DLF,HYF,IEF)**  
 TCC MISS LEXUS 84 ET (DLF,HYF,IEF)

CHURCHILL SENSATION 028X (SOD)(CHB)(DLF,HYF,IEF)  
 CHURCHILL LADY 078X (DLF,HYF,IEF)  
 GOLDEN OAK OUTCROSS 18U (SOD)(CHB)(DLF,HYF,IEF)  
 BR CSF BRIELLE 8052 ET (DLF,HYF,IEF)  
 CRR ABOUT TIME 743 (SOD)(DLF,HYF,IEF)  
 WBCC WCC 69P MS RANGELAND U800 (DLF,HYF,IEF)  
 SLDK POSEIDON R09 ET  
 LCC TWO TIMIN 438 ET (DLF,HYF,IEF)

CE	BW	WW	YW	Milk	REA	Marb	CHB
-1.6	3.2	60	102	27	0.75	0.1	123

Big-time donor potential in the powerfully constructed conservative marked Belle Air daughter. Dam is a flushmate sister to the dam of the Lots 3A and 3B. If you like cattle that are dark red, red-eyed, stout boned and sound in structure you will love this female. *Ranks in the top 2% for REA, top 5% for \$CHB, top 10% for WW and YW, top 20% for Marb, top 25% for Milk.*

**4B**

## EXR LEXUS 8128 ET (DLF,HYF,IEF)

1/18/2018 COW - 43899149 8128 Horned

BAR S LHF 028 240 (DLF,HYF,IEF)  
**BR BELLE AIR 6011 (DLF,HYF,IEF)**  
 BR BELLE 4082 ET (DLF,HYF,IEF)

LSW WCC ABOUT TIME X06 (DLF,HYF,IEF)  
**EXR LEXUS 4208 ET (DLF,HYF,IEF)**  
 TCC MISS LEXUS 84 ET (DLF,HYF,IEF)

CHURCHILL SENSATION 028X (SOD)(CHB)(DLF,HYF,IEF)  
 CHURCHILL LADY 078X (DLF,HYF,IEF)  
 GOLDEN OAK OUTCROSS 18U (SOD)(CHB)(DLF,HYF,IEF)  
 BR CSF BRIELLE 8052 ET (DLF,HYF,IEF)  
 CRR ABOUT TIME 743 (SOD)(DLF,HYF,IEF)  
 WBCC WCC 69P MS RANGELAND U800 (DLF,HYF,IEF)  
 SLDK POSEIDON R09 ET  
 LCC TWO TIMIN 438 ET (DLF,HYF,IEF)

CE	BW	WW	YW	Milk	REA	Marb	CHB
-10.6	6.1	67	116	27	0.57	-0.03	124

This female was a little greener at picture time but by sale time she will be one to look for. Huge boned, goggle-eyed and loaded with performance! *Ranks in the top 1% for YW, top 3% for WW, top 5% for \$CHB, top 10% for REA, top 25% for Milk.*



**EXR Lexus 4208 ET • Dam of Lots 4A, 4B & 4C**

**4c**

## THREE EMBRYOS

UPS SENSATION 2296 ET  
**H DEBERARD 7454 ET**  
 RST GAT NST Y79D LADY 54B ET

LSW WCC ABOUT TIME X06  
**EXR LEXUS 4208 ET**  
 TCC MISS LEXUS 84 ET

CHURCHILL SENSATION 028X  
 UPS JT MISS NEON 7811 ET  
 WORR OWEN TANERAY Y79D ET  
 H H LADY MAXIMUM 111 ET  
 CRR ABOUT TIME 743  
 WBCC WCC 69P MS RANGELAND U800  
 SLDK POSEIDON R09 ET  
 LCC TWO TIMIN 438 ET

	CE	BW	WW	YW	Milk	REA	Marb	CHB
<b>SIRE</b>	-3.7	5.3	64	103	24	0.96	0.16	138
<b>DAM</b>	-4.5	4.8	55	90	24	0.65	-0.07	119

Guarantee 1 pregnancy if put in by a certified embryologist.





**LOT 5**

**5**

## BR GABRIELLE 5507 ET (DLF,HYF,IEF)

1/6/2015 COW - 43630052 5507 Horned

BR MSU LANSING 68J

**BR LANSING 3060**

BR L1 DOMINETTE 7022 (DOD)

C -S PURE GOLD 98170 (SOD)(DLF,HYF,IEF)

**BR GOLDRIEL 3029 ET (DLF,HYF,IEF)**

MSU BR MS KEYNOTE 62H

REMITALL KEYNOTE 20X (SOD)(CHB)

BR L1 DOMINETTE 6052

DESERT EDGE (SOD)

BR MS SUMMIT 1040

C GOLD RUSH 1ET

C MS DOM 93218 1ET

REMITALL KEYNOTE 20X (SOD)(CHB)

BR MS L1 MARK 2105

CE	BW	WW	YW	Milk	REA	Marb	CHB
-4.0	5.2	63	93	24	0.6	0.07	107

### Donor Alert!

**Checked safe to B&C Stock Option 6026D ET, approx. due date 3/28/19.**

5507 is a full sister to the now deceased immortal donor BR Gabrielle 5082 one of if not the most influential female for the Barber Ranch in Channing, Texas. 5082 was crowned Grand Champion Horned Female as a May heifer calf at the 2006 NWSS. She then went on to be crowned Grand Champion at the 2006 JNHE and continued her winning streak capturing Grand Champion Horned Female and Supreme Overall at the 2007 NWSS.

A sexed female pregnancy sired by DM BR Sooner and out of 5507 sold in last year's sale commanding \$17,200 to GKB.

If you have been in search of a big-time donor 5507 fits that bill to a tee! She has tremendous depth, big sweep to her rib, stout hipped, wide topped, huge boned and is just flat out a beast of a cow.

With the purchase of 5507 the buyer will receive 1 straw of DM BR Sooner semen to use in a future IVF flush on 5507 in which the embryos will be split between the buyer and Express Ranches.

Selling one-half interest.

Ranks in the top 4% for WW, top 5% for REA, top 15% for YW, top 25% for \$CHB.



**DM BR Sooner** • One straw of semens sells with BR Gabrielle 5507 ET





**LOT 6**

**6**

## EXR OKSANA 6254 ET (DLF,HYF,IEF)

12/15/2016 COW - P43769958 6254 Polled

NJW 73S M326 TRUST 100W ET (SOD)(CHB)(DLF,HYF,IEF) KCF BENNETT 3008 M326 (SOD)(DLF,HYF,IEF)  
 NJW 33TB 100W TRUST 167Y (CHB)(DLF,HYF,IEF) NJW P606 72N DAYDREAM 73S (DLF,HYF,IEF)  
 BROOKVIEW 242 TEQUILA ROSE 33T (DLF,HYF,IEF) FELTONS LEGEND 242 (SOD)(HYF)  
 BROOKVIEW M48 MIS RILEY ROSE (DLF,HYF,IEF)  
 HVH KREMLIN 57F 108K MSU MF HUDSON 19H (SOD)(DLF,HYF,IEF)  
 HVH OKSANA 4L 33N (DLF,HYF,IEF) HVH OKSANA 10Z 57F  
 HVH GENETIC QUEEN 53H 4L (DLF,HYF,IEF) GK GENETIC EXPLOSION (SOD)(DLF,HYF,IEF)  
 HVH MISS 512 35D 53H

CE	BW	WW	YW	Milk	REA	Marb	CHB
10.1	1.5	56	96	21	0.56	0.21	113

**Checked safe to LCX Perfecto 11B ET, approx. due date 2/4/19.**

A direct daughter of 33N the dam of Redeem and sired by one of the hottest bulls in the breed today 167Y a member of the Genex line up. This may be the best spring bred heifer we have ever offered. She not only excels in phenotype she excels numerically. Tremendous depth and power in this royal bred direct daughter of the immortal donor dam 33N who commanded \$35,000 at 15 years of age in the Loewen Legacy Dispersal.

Ranks in the top 4% for CED, top 15% for YW, Marb and REA, top 20% for BW, top 25% for WW.



**HVH Oksana 4L 33N • Dam of Lot 6**



**NJW 33TB 100W Trust 167Y • Sire of Lot 6**





**LOT 7**

**7**

## EXR MS EXCEL 6033 (DLF,HYF,IEF)

2/16/2016 COW - 43673893 6033 Horned

SHF LITERAL W18 Y90 (DLF,HYF,IEF)  
**SHF ACCESS Y90 A216 (DLF,HYF,IEF)**  
 SHF MISTY 33T Y35 (DLF,HYF,IEF)

H W4 GRIZZLY 0146 ET (DLF,HYF,IEF)  
**H HW4 MS 6007S EXCEL 4011**  
 K&B MS EXCEL 6007S (DLF,HYF,IEF)

SHF WONDER M326 W18 ET (CHB)(DLF,HYF,IEF)  
 SHF PROGRESS P20 U74 (DLF,HYF,IEF)  
 LOEWEN M326 SIR 33T (CHB)(DLF,IEF)  
 HVH QUEEN 1022 37S (DLF,HYF,IEF)  
 GOLDEN OAK OUTCROSS 18U (SOD)(CHB)(DLF,HYF,IEF)  
 C MS PURE GOLD 2003 (DLF,HYF,IEF)  
 GO EXCEL L18 (SOD)(DLF,HYF,IEF)  
 K&B MS 927 ADVANCE 3205

CE	BW	WW	YW	Milk	REA	Marb	CHB
0.3	3.6	54	80	25	0.19	0.1	85

**Checked safe to CRR 028X Roll Tide 612, approx. due date 1/12/19.**

This two-year-old Access daughter is equipped with a gorgeous udder and has exceptional phenotype. 6033 is built right from the ground up, sharp fronted and loaded with pigment. Not many operations will offer their elite two year old females in production but at Express Ranches you can expect the best to be offered each and every year.

Ranks in the top 25% for WW.



**LOT 7A**

**7A**

## EXR MS EXCEL 8014 (DLF,HYF,IEF)

1/7/2018 COW - P43876807 8014 Polled

NJW 98S R117 RIBEYE 88X ET (SOD)(DLF,HYF,IEF)  
**LCX PERFECTO 11B ET (DLF,HYF,IEF)**  
 WLL ZOEY 3Z (DLF,HYF,IEF)

SHF ACCESS Y90 A216 (DLF,HYF,IEF)  
**EXR MS EXCEL 6033 (DLF,HYF,IEF)**  
 H HW4 MS 6007S EXCEL 4011

SHF RIB EYE M326 R117 (SOD)(DLF,HYF,IEF)  
 NJW 9126J DEW DOMINO 98S (DOD)(DLF,HYF,IEF)  
 TH 122 711 VICTOR 719T (SOD)(CHB)(DLF,HYF,IEF)  
 WLL VENUS 19X  
 SHF LITERAL W18 Y90 (DLF,HYF,IEF)  
 SHF MISTY 33T Y35 (DLF,HYF,IEF)  
 H W4 GRIZZLY 0146 ET (DLF,HYF,IEF)  
 K&B MS EXCEL 6007S (DLF,HYF,IEF)

CE	BW	WW	YW	Milk	REA	Marb	CHB
-1.4	5.2	75	116	30	0.59	0.17	127

Big spread Perfecto daughter with value added carcass merit and maternal strength.

Ranks in the top 1% for WW, top 2% for YW and \$CHB, top 10% for Milk and REA, top 25% Marb.





**LOT 8**

**8**

## EXR PRINCESS 6139 ET (DLF,HYF,IEF)

1/17/2016 COW - P43662426 6139 Polled/Scurred

SHF LITERAL W18 Y90 (DLF,HYF,IEF)  
**SHF ACCESS Y90 A216 (DLF,HYF,IEF)**  
 SHF MISTY 33T Y35 (DLF,HYF,IEF)

ALH 034 PLATO DOM 0424 (DLF,HYF,IEF)  
**GV CMR MS 424 167S Y122ET (DLF,HYF,IEF)**  
 JWR M41 PRINCESS 167S (DLF,HYF,IEF)

SHF WONDER M326 W18 ET (CHB)(DLF,HYF,IEF)  
 SHF PROGRESS P20 U74 (DLF,HYF,IEF)  
 LOEWEN M326 SIR 33T (CHB)(DLF,IEF)  
 HVH QUEEN 1022 37S (DLF,HYF,IEF)  
 BTCC 207 M034  
 ALH 43 FAVORITE 919  
 PW VICTOR BOOMER P606 (SOD)(DLF,HYF,IEF)  
 HHH K570 H132 M41

CE	BW	WW	YW	Milk	REA	Marb	CHB
0.4	3.1	46	69	24	0.23	0.26	69

**Checked safe to BR Trust 0217 3373, approx. due date 1/12/19.**

A powerful two-year-old Access daughter who stems back to the immortal 167S female that served as a donor for Grandview/CMR, Loewen Herefords and Sandhill Farms. 167S was also the grand dam of Z210 the resident herd sire for Sandhill Farms and NJW Polled Herefords. Strong maternal presence with proven cow families stacked in her pedigree.

Ranks in the top 25% for Marb.

**8A**

## EXR PRINCESS 8023 (DLF,HYF,IEF)

1/13/2018 COW - P43876813 8023 Polled

NJW 98S R117 RIBEYE 88X ET (SOD)(DLF,HYF,IEF)  
**LCX PERFECTO 11B ET (DLF,HYF,IEF)**  
 WLL ZOEY 3Z (DLF,HYF,IEF)

SHF ACCESS Y90 A216 (DLF,HYF,IEF)  
**EXR PRINCESS 6139 ET (DLF,HYF,IEF)**  
 GV CMR MS 424 167S Y122ET (DLF,HYF,IEF)

SHF RIB EYE M326 R117 (SOD)(DLF,HYF,IEF)  
 NJW 9126J DEW DOMINO 98S (DOD)(DLF,HYF,IEF)  
 TH 122 711 VICTOR 719T (SOD)(CHB)(DLF,HYF,IEF)  
 WLL VENUS 19X  
 SHF LITERAL W18 Y90 (DLF,HYF,IEF)  
 SHF MISTY 33T Y35 (DLF,HYF,IEF)  
 ALH 034 PLATO DOM 0424 (DLF,HYF,IEF)  
 JWR M41 PRINCESS 167S (DLF,HYF,IEF)

CE	BW	WW	YW	Milk	REA	Marb	CHB
-2.7	4	66	98	30	0.72	0.04	101

This Perfecto daughter is going to be one awesome production female. She has the look and EPD profile with valued added performance.

Ranks in the top 4% for WW, top 10% for Milk, top 15% for YW.



**LOT 8A**



# BROODY YEARLING HEIFERS



9

## EXR PRIMROSE 7400 (DLF,HYF,IEF)

9/3/2017 COW - P43839031 7400 Polled

HYALITE ON TARGET 936 (CHB)(DLF,HYF,IEF)  
**R LEADER 6964 (CHB)(DLF,HYF,IEF)**  
 R MISS REVOLUTION 1009 (DOD)(DLF,HYF,IEF)

SCHU-LAR ON TARGET 22S (SOD)(CHB)(DLF,HYF,IEF)  
 HYALITE TS LASS 310 (DLF,HYF,IEF)  
 MSU TCF REVOLUTION 4R (SOD)(CHB)(DLF,HYF,IEF)  
 R MISS WRANGLER 3007

NJW 73S W18 HOMETOWN 10Y ET (CHB)(DLF,HYF,IEF)

### EXR PRIMROSE 4128 ET

TH 67W 719T PRIMROSE 3Y (DLF,HYF,IEF)

SHF WONDER M326 W18 ET (CHB)(DLF,HYF,IEF)  
 NJW P606 72N DAYDREAM 73S (DLF,HYF,IEF)  
 TH 122 711 VICTOR 719T (SOD)(CHB)(DLF,HYF,IEF)  
 TH 166S 45P PRIMROSE 67W (DOD)(DLF,HYF,IEF)

CE	BW	WW	YW	Milk	REA	Marb	CHB
3.0	2.9	63	103	31	0.65	0.21	115

Short-marked, red-eyed, big-bellied Leader daughter who has a big-time EPD profile. Not only does she have the spread, she also has maternal strength and valued-added carcass merit for both REA and Marbling. If you are serious about raising elite seedstock, you need to start with female like 7400.

Ranks in the top 3% for REA, top 10% for WW, YW and Milk, top 15% for Marb and \$CHB.

Sells Open.



10

## EXR GEMINI 7233 ET (DLF,HYF,IEF)

9/7/2017 COW - P43850435 7233 Homo Polled

EFBEEF TFL U208 TESTED X651 ET (DLF,HYF,IEF)  
**INNISFAIL WHR X651/723 4013 ET (DLF,HYF,IEF)**  
 INNISFAIL P230 T723 (DLF,HYF,IEF)

EFBEEF FOREMOST U208 (DLF,HYF,IEF)  
 EFBEEF P606 MABEL R415  
 EF F745 FRANK P230 (DLF,HYF,IEF)  
 INNISFAIL 235 R501 ET (DOD)(DLF,HYF,IEF)

TH 223 711 VICTOR 755T (DLF,HYF,IEF)

### TH 89T 755T GEMINI 471Z (DLF,HYF,IEF)

TH 16G 20N GEMINI 89T (DLF,HYF,IEF)

DRF JWR PRINCE VICTOR 711 (SOD)  
 KBCR 19D DOMINETTE 223 (DLF,IEF)  
 NPH 20X SPARTAN 20N (SOD)(DLF,HYF,IEF)  
 TEE-JAY 707B GEMINI 16G ET

CE	BW	WW	YW	Milk	REA	Marb	CHB
-0.3	3.9	63	98	19	0.59	0.31	103

The dam of 7233, 471Z, was a feature lot last year commanding \$11,000. Two maternal brothers have brought \$10,750 and \$8,000 in the bull sales. Sired by the up-and-coming young ST Genetics AI sire 4013 and stems back to the \$116,000 89T donor that was a former high seller for Topp Herefords.

Ranks in the top 5% for Marb, top 10% for WW, YW and REA.

Sells Open.



11

## EXR KELLY 7225 ET (DLF,HYF,IEF)

9/3/2017 COW - P43850426 7225 Homo Polled

SHF WONDER M326 W18 ET (CHB)(DLF,HYF,IEF)  
**NJW 73S W18 HOMETOWN 10Y ET (CHB)(DLF,HYF,IEF)**  
 NJW P606 72N DAYDREAM 73S (DLF,HYF,IEF)

KCF BENNETT 3008 M326 (SOD)(DLF,HYF,IEF)  
 SHF GOVERNESS 236G L37 (DLF,HYF,IEF)  
 PW VICTOR BOOMER P606 (SOD)(DLF,HYF,IEF)  
 NJW 94J DEW 72N (DLF,HYF,IEF)

CRR 719 CATAPULT 109 (DLF,HYF,IEF)

### CRR 109 KELLY 411 (DLF,HYF,IEF)

CRR 435 KELLY 161 (DLF,HYF,IEF)

TH 122 711 VICTOR 719T (SOD)(CHB)(DLF,HYF,IEF)  
 CRR 4037 ECLIPSE 808 (DLF,HYF,IEF)  
 DM BR SOONER (CHB)(DLF,HYF,IEF)  
 CRR D03 KELLY 361 (DLF,IEF)

CE	BW	WW	YW	Milk	REA	Marb	CHB
1.5	4.3	65	107	33	0.65	0.37	120

This powerfully designed 10Y daughter's dam is 411 the maternal sister to 178 the dam of 5280 the \$200,000 resident herd sire for Colyer Herefords and Bill King Ranch.

This 10Y daughter carries more red meat, muscle and bone that many of her counterparts. We feel this female does so many things right as she has exceptional phenotype, is dark red in color and has a big-time performance EPD profile.

Ranks in the top 3% for Milk and Marb, top 4% for YW, top 5% for WW, top 10% for REA and \$CHB.

Sells Open.





**LOT 12**

**12**

## EXR TERRI 8185 ET {DLF,HYF,IEF}

5/1/2018 COW - 43937724 8185 Polled

CRR 719 CATAPULT 109 {DLF,HYF,IEF}  
**KOLT CHICAGO 2004 ET {DLF,HYF,IEF}**  
 CHEZ STRAWBERRY WINE ET 204Z {DLF,HYF,IEF}

MSU TCF REVOLUTION 4R {SOD}{CHB}{DLF,HYF,IEF}  
**EXR TERRI 484 ET {DLF,HYF,IEF}**  
 BR TERRI 9130 ET {DLF,HYF,IEF}

TH 122 711 VICTOR 719T {SOD}{CHB}{DLF,HYF,IEF}  
 CRR 4037 ECLIPSE 808 {DLF,HYF,IEF}  
 CRR ABOUT TIME 743 {SOD}{DLF,HYF,IEF}  
 R SWEET RED WINE 039 {DLF,HYF,IEF}  
 FELTONS LEGEND 242 {SOD}{HYF}  
 MSU TCF RACHAEL ET 54N {DLF,HYF,IEF}  
 BR LANSING 3060  
 DM BR TERRI 646 ET {DLF,HYF,IEF}

CE	BW	WW	YW	Milk	REA	Marb	CHB
-1.2	3.7	65	108	26	0.47	0.09	116

This stylish Chicago May polled female is a direct daughter of Terri 484, the 2015 Fort Worth Stock Show Reserve Champion Polled Female. When you talk about pedigree power with style 8185 has it! Big-time show prospect with a lot of earning potential.

**13**

## EXR ONLINE WINE 8026 {DLF,HYF,IEF}

1/16/2018 COW - 43876816 8026 Horned

NJW 98S R117 RIBEYE 88X ET {SOD}{DLF,HYF,IEF}  
**LCX PERFECTO 11B ET {DLF,HYF,IEF}**  
 WLL ZOEY 3Z {DLF,HYF,IEF}

REMITALL ONLINE 122L {SOD}{CHB}{DLF,HYF,IEF}  
**KOLT ONLINE WINE 222S ET**  
 CHEZ STRAWBERRY WINE ET 204Z {DLF,HYF,IEF}

SHF RIB EYE M326 R117 {SOD}{DLF,HYF,IEF}  
 NJW 9126J DEW DOMINO 98S {DOD}{DLF,HYF,IEF}  
 TH 122 711 VICTOR 719T {SOD}{CHB}{DLF,HYF,IEF}  
 WLL VENUS 19X  
 REMITALL EMBRACER 8E {SOD}{CHB}{HYF}  
 REMITALL CATALINA 24H  
 CRR ABOUT TIME 743 {SOD}{DLF,HYF,IEF}  
 R SWEET RED WINE 039 {DLF,HYF,IEF}

CE	BW	WW	YW	Milk	REA	Marb	CHB
2.2	4.7	71	108	29	0.59	0.06	113

This striking Perfecto daughter stems back to the \$67,000 Chez Strawberry Wine ET 204Z, who was named the 2013 JNHE Reserve Grand Champion Polled Female. You will appreciate the power and design 8026 possesses as her best day are in front of her. A big-time donor in the making with unlimited potential. Get in on the ground floor of the Perfecto daughters, they are the real deal!  
 Ranks in the top 2% for WW, top 4% for YW, top 10% for \$CHB, top 15% for REA.



**LOT 13**



PRIMROSE 4126



14 | **EXR PRIMROSE 4126 ET** (DLF,HYF,IEF)  
9/2/2014 COW - P43516103 4126 Polled

SHF WONDER M326 W18 ET (CHB)(DLF,HYF,IEF) KCF BENNETT 3008 M326 (SOD)(DLF,HYF,IEF)  
NJW 73S W18 HOMETOWN 10Y ET (CHB)(DLF,HYF,IEF) SHF GOVERNESS 236G L37 (DLF,HYF,IEF)  
NJW P606 72N DAYDREAM 73S (DLF,HYF,IEF) PW VICTOR BOOMER P606 (SOD)(DLF,HYF,IEF)  
TH 122 711 VICTOR 719T (SOD)(CHB)(DLF,HYF,IEF) NJW 94J DEW 72N (DLF,HYF,IEF)  
TH 67W 719T PRIMROSE 3Y (DLF,HYF,IEF) DRF JWR PRINCE VICTOR 711 (SOD)  
TH 166S 45P PRIMROSE 67W (DOD)(DLF,HYF,IEF) NJW FHF 9710 TANK 45P (SOD)(CHB)(DLF,HYF,IEF)  
TH 605F 707B PRIMROSE 166S ET KBCR 19D DOMINETTE 122 (DLF,IEF)

CE	BW	WW	YW	Milk	REA	Marb	CHB
-3.3	3.4	58	94	33	0.91	0.23	124

**Due before sale day to CRR 109 Catapult 322.**  
This powerfully designed fall bred donor displays tremendous phenotype coupled with unmatched power. 4126 is without question one of the more powerful 10Y daughters you will find. She has a high-performing EPD profile that checks all the boxes. She displays rapid growth, heavy carcass weight with Marbling. Ranks in the top 1% for REA, top 2% for \$CHB, top 4% for Milk, top 10% for WW, YW and Marb.

12 Express Ranches Hereford Event

15A | **EXR PRIMROSE 8209 ET** (DLF,HYF,IEF)  
5/2/2018 COW - 43927969 8209 Horned

UPS TCC NITRO 1ET (SOD)(CHB)(DLF,HYF,IEF) GH NEON 17N (SOD)(CHB)(DLF,HYF,IEF)  
BR NITRO AVENTUS 3116 ET (DLF,HYF,IEF) LCC TWO TIMIN 438 ET (DLF,HYF,IEF)  
BR ABIGAIL 8130 ET (DLF,HYF,IEF) DM BR SOONER (CHB)(DLF,HYF,IEF)  
BR GABRIELLE 5082 (DLF,HYF,IEF) NJW 73S W18 HOMETOWN 10Y ET (CHB)(DLF,HYF,IEF)  
EXR PRIMROSE 4126 ET (DLF,HYF,IEF) SHF WONDER M326 W18 ET (CHB)(DLF,HYF,IEF)  
TH 67W 719T PRIMROSE 3Y (DLF,HYF,IEF) NJW P606 72N DAYDREAM 73S (DLF,HYF,IEF)  
TH 122 711 VICTOR 719T (SOD)(CHB)(DLF,HYF,IEF)  
TH 166S 45P PRIMROSE 67W (DOD)(DLF,HYF,IEF)

CE	BW	WW	YW	Milk	REA	Marb	CHB
-3.8	5	72	112	26	0.96	0.12	141

What a pair of May sisters (Lots 15A and 15B) being offered out of the powerful 10Y donor who sells as Lot 14. Sired by the 2016 Supreme Champion Hereford Bull, Aventus, this pair of flushmate sisters are striking on the profile, square hipped, big boned and sound in their structure.  
Ranks in the top 1% for WW, YW, REA and \$CHB





**LOT 14**



**LOT 15A**



**LOT 15B**



**LOT 15C**

## 15B | EXR PRIMROSE 8191 ET (DLF,HYF,IEF)

5/4/2018 COW - 43927960 8191 Horned

UPS TCC NITRO 1ET (SOD)(CHB)(DLF,HYF,IEF)  
**BR NITRO AVENTUS 3116 ET (DLF,HYF,IEF)**  
 BR ABIGAIL 8130 ET (DLF,HYF,IEF)

GH NEON 17N (SOD)(CHB)(DLF,HYF,IEF)  
 LCC TWO TIMIN 438 ET (DLF,HYF,IEF)  
 DM BR SOONER (CHB)(DLF,HYF,IEF)  
 BR GABRIELLE 5082 (DLF,HYF,IEF)

NJW 73S W18 HOMETOWN 10Y ET (CHB)(DLF,HYF,IEF)  
**EXR PRIMROSE 4126 ET (DLF,HYF,IEF)**  
 TH 67W 719T PRIMROSE 3Y (DLF,HYF,IEF)

SHF WONDER M326 W18 ET (CHB)(DLF,HYF,IEF)  
 NJW P606 72N DAYDREAM 73S (DLF,HYF,IEF)  
 TH 122 711 VICTOR 719T (SOD)(CHB)(DLF,HYF,IEF)  
 TH 166S 45P PRIMROSE 67W (DOD)(DLF,HYF,IEF)

CE	BW	WW	YW	Milk	REA	Marb	CHB
4.6	2.3	59	91	26	0.75	0.17	111

Ranks in the top 2% for REA, top 15% for WW, top 20% for YW, top 25% for Marb.

## 15c | EXR PRIMROSE 8212 ET (DLF,HYF,IEF)

6/1/2018 COW - 43927972 8212 Horned

UPS TCC NITRO 1ET (SOD)(CHB)(DLF,HYF,IEF)  
**BR NITRO AVENTUS 3116 ET (DLF,HYF,IEF)**  
 BR ABIGAIL 8130 ET (DLF,HYF,IEF)

GH NEON 17N (SOD)(CHB)(DLF,HYF,IEF)  
 LCC TWO TIMIN 438 ET (DLF,HYF,IEF)  
 DM BR SOONER (CHB)(DLF,HYF,IEF)  
 BR GABRIELLE 5082 (DLF,HYF,IEF)

NJW 73S W18 HOMETOWN 10Y ET (CHB)(DLF,HYF,IEF)  
**EXR PRIMROSE 4126 ET (DLF,HYF,IEF)**  
 TH 67W 719T PRIMROSE 3Y (DLF,HYF,IEF)

SHF WONDER M326 W18 ET (CHB)(DLF,HYF,IEF)  
 NJW P606 72N DAYDREAM 73S (DLF,HYF,IEF)  
 TH 122 711 VICTOR 719T (SOD)(CHB)(DLF,HYF,IEF)  
 TH 166S 45P PRIMROSE 67W (DOD)(DLF,HYF,IEF)

CE	BW	WW	YW	Milk	REA	Marb	CHB
1.4	4.1	67	102	26	0.96	0.1	137

Young, green and just a June baby. We feel this female has a world of potential once she hits her stride. She has that killer show look, is well balanced and has the power it takes to get across the finish line.

Ranks in the top 1% for REA and \$CHB, top 3% for WW, top 5% for YW.



# SENSATION DAUGHTERS



The donor dam of Lots 16A and 16B was the feature female in the 2016 Hereford Event commanding \$60,000 to Polzin Cattle Co. She is without question one of the best Revolution daughters you will ever lay your eyes on. This pair of flushmate sisters are sired by the sire of Champions 2296 and resemble many of his strong attributes soft middle, great hair, sound in structure with excellent balance and eye appeal.

## 16A

### EXR EMMA 8175 ET (DLF,HYF,IEF)

3/23/2018 COW - P43899975 8175 Polled

CHURCHILL SENSATION 028X (SOD)(CHB)(DLF,HYF,IEF)

**UPS SENSATION 2296 ET (CHB)(DLF,HYF,IEF)**

UPS JT MISS NEON 7811 1ET (DLF,HYF,IEF)

MSU TCF REVOLUTION 4R (SOD)(CHB)(DLF,HYF,IEF)

**WALKER MISS 4R 545 236 (DLF,HYF,IEF)**

WALKER MISS P606 06N 545 (DLF,HYF,IEF)

UPS DOMINO 3027 (SOD)(DLF,HYF,IEF)

CHURCHILL LADY 7202T ET (DLF,HYF,IEF)

GH NEON 17N (SOD)(CHB)(DLF,HYF,IEF)

LCC TWO TIMIN 438 ET (DLF,HYF,IEF)

FELTONS LEGEND 242 (SOD)(HYF)

MSU TCF RACHAEL ET 54N (DLF,HYF,IEF)

PW VICTOR BOOMER P606 (SOD)(DLF,HYF,IEF)

WPHF DRF EMMA 122L 06N ET

CE	BW	WW	YW	Milk	REA	Marb	CHB
2.8	2.1	69	106	25	1.05	0.21	144

Ranks in the top 1% for REA and \$CHB, top 2% for WW, top 4% for YW, top 15% for Marb.

## 16B

### EXR EMMA 8176 ET (DLF,HYF,IEF)

3/24/2018 COW - P43899973 8176 Polled

CHURCHILL SENSATION 028X (SOD)(CHB)(DLF,HYF,IEF)

**UPS SENSATION 2296 ET (CHB)(DLF,HYF,IEF)**

UPS JT MISS NEON 7811 1ET (DLF,HYF,IEF)

MSU TCF REVOLUTION 4R (SOD)(CHB)(DLF,HYF,IEF)

**WALKER MISS 4R 545 236 (DLF,HYF,IEF)**

WALKER MISS P606 06N 545 (DLF,HYF,IEF)

UPS DOMINO 3027 (SOD)(DLF,HYF,IEF)

CHURCHILL LADY 7202T ET (DLF,HYF,IEF)

GH NEON 17N (SOD)(CHB)(DLF,HYF,IEF)

LCC TWO TIMIN 438 ET (DLF,HYF,IEF)

FELTONS LEGEND 242 (SOD)(HYF)

MSU TCF RACHAEL ET 54N (DLF,HYF,IEF)

PW VICTOR BOOMER P606 (SOD)(DLF,HYF,IEF)

WPHF DRF EMMA 122L 06N ET

CE	BW	WW	YW	Milk	REA	Marb	CHB
0.3	4.1	69	113	25	0.97	0.1	140

Ranks in the top 1% for REA and \$CHB, top 2% for WW and YW.



UPS Sensation 2296 ET • Sire of Lots 16A & 16B





**LOT 17A**



**Walker Miss 4R 545 236**  
Dam of Lots 17A & 17B



**LOT 17B**

The power of 236 is displayed in this pair of striking flushmate Mason sisters (Lots 17A and 17B). Dark red in color with tremendous muscle expression, bone, balance and eye appeal. The sisters fall in two different classes as they are January and February heifers, respectively. Grab onto the genetic excellence of 236!

**17A** | **EXR EMMA 8119 ET** (DLF,HYF,IEF)  
1/13/2018 COW - P43886574 8119 Polled

CRR ABOUT TIME 743 (SOD)(DLF,HYF,IEF)  
**CHAC MASON 2214** (DLF,HYF,IEF)  
GKB 31 GRACE 7100 (DLF,HYF,IEF)

MSU TCF REVOLUTION 4R (SOD)(CHB)(DLF,HYF,IEF)  
**WALKER MISS 4R 545 236** (DLF,HYF,IEF)  
WALKER MISS P606 06N 545 (DLF,HYF,IEF)

THM DURANGO 4037 (SOD)(DLF,HYF,IEF)  
CRR D03 CASSIE 206 (DLF,HYF,IEF)  
CCLC GKB PURE GOLD 31  
L STAR GOLDIE P153  
FELTONS LEGEND 242 (SOD)(HYF)  
MSU TCF RACHAEL ET 54N (DLF,HYF,IEF)  
PW VICTOR BOOMER P606 (SOD)(DLF,HYF,IEF)  
WPHF DRF EMMA 122L 06N ET

CE	BW	WW	YW	Milk	REA	Marb	CHB
-2.4	4.7	59	92	25	0.75	0.09	110

Ranks in the top 3% for REA, top 15% for WW and YW, top 25% for \$CHB

**17B** | **EXR EMMA 8144 ET** (DLF,HYF,IEF)  
2/4/2018 COW - P43899163 8144 Polled

CRR ABOUT TIME 743 (SOD)(DLF,HYF,IEF)  
**CHAC MASON 2214** (DLF,HYF,IEF)  
GKB 31 GRACE 7100 (DLF,HYF,IEF)



MSU TCF REVOLUTION 4R (SOD)(CHB)(DLF,HYF,IEF)  
**WALKER MISS 4R 545 236** (DLF,HYF,IEF)  
WALKER MISS P606 06N 545 (DLF,HYF,IEF)

THM DURANGO 4037 (SOD)(DLF,HYF,IEF)  
CRR D03 CASSIE 206 (DLF,HYF,IEF)  
CCLC GKB PURE GOLD 31  
L STAR GOLDIE P153  
FELTONS LEGEND 242 (SOD)(HYF)  
MSU TCF RACHAEL ET 54N (DLF,HYF,IEF)  
PW VICTOR BOOMER P606 (SOD)(DLF,HYF,IEF)  
WPHF DRF EMMA 122L 06N ET

CE	BW	WW	YW	Milk	REA	Marb	CHB
2.4	3.8	58	91	25	0.78	0.06	117

Ranks in the top 1% for REA, top 15% for \$CHB, top 20% for WW.





LOT 18

**18** | **EXR EMMA 6072** (DLF,HYF,IEF)  
9/1/2016 COW - P43729503 6072 Homo Polled

TH 122 711 VICTOR 719T (SOD)(CHB)(DLF,HYF,IEF)  
**CRR 719 CATAPULT 109** (DLF,HYF,IEF)  
CRR 4037 ECLIPSE 808 (DLF,HYF,IEF)

MSU TCF REVOLUTION 4R (SOD)(CHB)(DLF,HYF,IEF)  
**WALKER MISS 4R 545 236** (DLF,HYF,IEF)  
WALKER MISS P606 06N 545 (DLF,HYF,IEF)

DRF JWR PRINCE VICTOR 711 (SOD)  
KBCR 19D DOMINETTE 122 (DLF,IEF)  
THM DURANGO 4037 (SOD)(DLF,HYF,IEF)  
CRR 420 ECLIPSE 688 (DLF,HYF,IEF)  
FELTONS LEGEND 242 (SOD)(HYF)  
MSU TCF RACHAEL ET 54N (DLF,HYF,IEF)  
PW VICTOR BOOMER P606 (SOD)(DLF,HYF,IEF)  
WPHF DRF EMMA 122L 06N ET

CE	BW	WW	YW	Milk	REA	Marb	CHB
5.9	2.7	62	99	28	0.76	-0.11	114

**LOT 18A:** EXR Flintlock 8405. Bull born 8/28/18 sired by JCS 240 Flintlock 5815. BW 81 lbs.

What a way to kick off the Fall Bred Heifer Division with this stout, attractively designed Catapult x 236 daughter. 236 has worked successfully to multiple mating and the Catapult mating is no exception. Just analyze the rib, bone, power and eye appeal of 6072. She has a strong EPD profile to complement her strong phenotype.

Ranks in the top 1% for REA, top 10% for WW and YW, top 15% for Milk and \$CHB.



CRR 719 Catapult 109 • Sire of Lot 18





LOT 19

19

## EXR SPLENDID 6064 (DLF,HYF,IEF)

5/23/2016 COW - P43730154 6064 Polled

GO 7195 ADVANCE X55 (DLF,HYF,IEF)  
**UPS ADVANCE 3738 (DLF,HYF,IEF)**  
 UPS MSS DOMINO 1673 ET

KCF BENNETT INFLUENCE Z80 (CHB)(DLF,HYF,IEF)  
**EXR SPLENDID 415 (DLF,HYF,IEF)**  
 ANL A NE SPLENDID 143 ET 11Z (DLF,HYF,IEF)

HH ADVANCE 7195T (SOD)(DLF,HYF,IEF)  
 GO MS L18 EXCEL P33 (DLF,HYF,IEF)  
 UPS DOMINO 3027 (SOD)(DLF,HYF,IEF)  
 UPS MISS MOM 2756 (DOD)  
 KCF BENNETT REVOLUTION X51 (CHB)(DLF,HYF,IEF)  
 KCF MISS M326 R52 (DOD)(DLF,HYF,IEF)  
 C NEW ERA ET (DLF,HYF,IEF)  
 ANL PBG 3N SPLENDOR 143T

CE	BW	WW	YW	Milk	REA	Marb	CHB
3.0	2.5	54	96	24	0.49	0.22	115

**LOT 19A:** EXR Catapult 322 8412. Bull born 9/1/18 sired by CRR 109 Catapult 322. BW 80 lbs.

The fall two-year old division has been one of the top divisions offered at the annual Express Ranches Hereford Event. They have excellent udder quality, are powerful in their design and make-up and are equipped with powerful EPD profiles. 6064 has the femininity with the added power we all seek in our cattle to go along with all her other positive attributes. Dam is a direct daughter of the \$52,000 performance sire Z80.

Ranks in the top 10% for YW, Marb and \$CHB, top 15% for REA, top 25% for WW.

20

## EXR MS DOM 6245 ET (DLF,HYF,IEF)

10/17/2016 COW - P43752239 6245 Homo Polled

TF UNION 4037 734 (DLF,HYF,IEF)  
**RW DM REMINGTON 734 4035 (DLF,HYF,IEF)**  
 RW DM AVERY 18U 2016 ET (DLF,HYF,IEF)

NJW FHF 9710 TANK 45P (SOD)(CHB)(DLF,HYF,IEF)  
**TH 618 45P MS DOM 90W (DLF,HYF,IEF)**  
 KBCR P606 MS DOM 618 (DLF,HYF,IEF)

THM DURANGO 4037 (SOD)(DLF,HYF,IEF)  
 TF NICKY 132 914 (DLF,IEF)  
 GOLDEN OAK OUTCROSS 18U (SOD)(CHB)(DLF,HYF,IEF)  
 DM 122L DOMINETTE 503 ET (DLF,HYF,IEF)  
 FHF 8403 STARBUCK 19H (SOD)  
 GV 579 VICTORIA 9710 (DLF,HYF,IEF)  
 PW VICTOR BOOMER P606 (SOD)(DLF,HYF,IEF)  
 KBCR 262D MS DOM 101

CE	BW	WW	YW	Milk	REA	Marb	CHB
0.9	2.7	51	75	29	0.54	0.2	92

**LOT 20A:** EXAR Ms Dom 8100. Heifer born 8/25/18 sired by CRR 109 Catapult 322. BW 70 lbs.

A direct daughter of the featured \$54,000-valued donor for Express Ranches and Polzin Cattle Co. 90W. 90W consistently produces high end seed stock of both sexes and 6245 is no exception. Her sire is none other than the \$70,000

resident herd-sire Remington the Lot 1 feature in the Inaugural 2015 Hereford Event.

Ranks in the top 10% for Milk and REA, top 15% for Marb.



LOT 20



SPRING-CALVING SPLIT PAIRS



LOT 21

21 | **BF CASHED IN 5604 ET** (DLF,HYF,IEF)  
10/15/2015 COW - P43668390 5604 Homo Polled

CRR ABOUT TIME 743 (SOD)(DLF,HYF,IEF)  
**DKF RO CASH FLOW 0245 ET** (DLF,HYF,IEF)  
JRR MISS TOBEY 711T (DLF,HYF,IEF)

TH 122 711 VICTOR 719T (SOD)(CHB)(DLF,HYF,IEF)  
**MSU RACHAEL 31Z** (DLF,HYF,IEF)  
MSU RACHAEL 38X ET (DLF,HYF,IEF)

THM DURANGO 4037 (SOD)(DLF,HYF,IEF)  
CRR D03 CASSIE 206 (DLF,HYF,IEF)  
FELTONS OZZIE 492 (SOD)(DLF,HYF,IEF)  
JRR RANDI 524R (DOD)(DLF,HYF,IEF)  
DRF JWR PRINCE VICTOR 711 (SOD)  
KBCR 19D DOMINETTE 122 (DLF,IEF)  
NUW FHF 9710 TANK 45P (SOD)(CHB)(DLF,HYF,IEF)  
MSU TCF RACHAEL ET 54N (DLF,HYF,IEF)

CE	BW	WW	YW	Milk	REA	Marb	CHB
2.4	4.3	69	104	34	0.59	-0.06	108

**Checked safe to BR Trust 0217 3373, approx. due date 1/12/19.**  
A beautifully designed female with a gorgeous udder, who stems back to the dam of Revolution 4R, 54N. The dam of 5404, 31Z, was a feature lot in the Michigan State University Dispersal and now serves as a resident donor for Burns Farms in Tennessee. This powerful Cash Flow daughter has the pedigree and ability to produce something special. The 31Z donor has produced in excess of \$100,000 in progeny sales to date.

Ranks in the top 1% for WW, top 3% for Milk and YW, top 10% for REA, top 25% for \$CHB.

21A | **EXR CASHED IN 8006** (DLF,HYF,IEF)  
1/2/2018 COW - P43876802 8006 Polled

SHF LITERAL W18 Y90 (DLF,HYF,IEF)  
**SHF ACCESS Y90 A216** (DLF,HYF,IEF)  
SHF MISTY 33T Y35 (DLF,HYF,IEF)

DKF RO CASH FLOW 0245 ET (DLF,HYF,IEF)  
**BF CASHED IN 5604 ET** (DLF,HYF,IEF)  
MSU RACHAEL 31Z (DLF,HYF,IEF)

SHF WONDER M326 W18 ET (CHB)(DLF,HYF,IEF)  
SHF PROGRESS P20 U74 (DLF,HYF,IEF)  
LOEWEN M326 SIR 33T (CHB)(DLF,IEF)  
HVH QUEEN 1022 37S (DLF,HYF,IEF)

CRR ABOUT TIME 743 (SOD)(DLF,HYF,IEF)  
JRR MISS TOBEY 711T (DLF,HYF,IEF)  
TH 122 711 VICTOR 719T (SOD)(CHB)(DLF,HYF,IEF)  
MSU RACHAEL 38X ET (DLF,HYF,IEF)

CE	BW	WW	YW	Milk	REA	Marb	CHB
6.7	2.7	58	83	30	0.29	0.17	82

A calving-ease dark red female with added rib and volume. The Access daughters have been some of the most sought-after progeny in former Express Ranches sales. They are fault-free in their design and have gorgeous udders in production.  
Ranks in the top 10% for Milk, top 15% for CED, top 20% or WW.



LOT 21A





**LOT 22**

**22**

## EXR 90W MS DOM 5031

9/14/2015 COW - P43628565 5031 Polled

NJW 73S M326 TRUST 100W ET (SOD)(CHB)(DLF,HYF,IEF)  
**NJW 78P TWENTYTWELVE 190Z ET (CHB)(DLF,HYF,IEF)**  
 NJW BW LADYSPORT DEW 78P ET (DLF,HYF,IEF)  
 NJW FHF 9710 TANK 45P (SOD)(CHB)(DLF,HYF,IEF)  
**TH 618 45P MS DOM 90W (DLF,HYF,IEF)**  
 KBCR P606 MS DOM 618 (DLF,HYF,IEF)  
 KCF BENNETT 3008 M326 (SOD)(DLF,HYF,IEF)  
 NJW P606 72N DAYDREAM 73S (DLF,HYF,IEF)  
 RU 20X BOULDER 57G (SOD)  
 SADDLE VLY LADYSPORT 120  
 FHF 8403 STARBUCK 19H (SOD)  
 GV 579 VICTORIA 9710 (DLF,HYF,IEF)  
 PW VICTOR BOOMER P606 (SOD)(DLF,HYF,IEF)  
 KBCR 262D MS DOM 101

CE	BW	WW	YW	Milk	REA	Marb	CHB
-7.8	4	46	78	31	0.55	0.23	116

**Checked safe to KDL EB Trump D58, approx. due date 2/6/19.**

A powerfully designed direct daughter of 90W who excels in maternal strength and carcass merit. This 2012 daughter is a big capacity female with added bone, foot, hip and body. She carries a lot of pigment and is conservative marked.

Ranks in the top 10% for Milk, Marb, REA and \$CHB.

**22A**

## EXR MS DOM 8008 (DLF,HYF,IEF)

1/3/2018 COW - P43904538 8008 Polled

CRR 719 CATAPULT 109 (DLF,HYF,IEF)  
**H WR SUSTAINABLE 5511 ET (DLF,HYF,IEF)**  
 H JOSLYN 820 ET (DLF,HYF,IEF)  
 NJW 78P TWENTYTWELVE 190Z ET (CHB)(DLF,HYF,IEF)  
**EXR 90W MS DOM 5031**  
 TH 618 45P MS DOM 90W (DLF,HYF,IEF)  
 TH 122 711 VICTOR 719T (SOD)(CHB)(DLF,HYF,IEF)  
 CRR 4037 ECLIPSE 808 (DLF,HYF,IEF)  
 GO EXCEL L18 (SOD)(DLF,HYF,IEF)  
 C MS PURE GOLD 2003 (DLF,HYF,IEF)  
 NJW 73S M326 TRUST 100W ET (SOD)(CHB)(DLF,HYF,IEF)  
 NJW BW LADYSPORT DEW 78P ET (DLF,HYF,IEF)  
 NJW FHF 9710 TANK 45P (SOD)(CHB)(DLF,HYF,IEF)  
 KBCR P606 MS DOM 618 (DLF,HYF,IEF)

CE	BW	WW	YW	Milk	REA	Marb	CHB
-4.3	5.8	55	88	31	0.53	0.1	108

Sired by the 2018 Fort Worth Stock Show Grand Champion Horned Bull, Sustainable. Stout-made female with added design and look.

Ranks in the top 10% for Milk, top 15% for REA.



**LOT 22A**



# SPRING-CALVING SPLIT PAIRS



LOT 23

## 23 | 6 MILE CAT LADY 524

10/28/2015 COW - P43697481 524 Polled

TH 122 711 VICTOR 719T (SOD)(CHB)(DLF,HYF,IEF)  
**CRR 719 CATAPULT 109 (DLF,HYF,IEF)**  
 CRR 4037 ECLIPSE 808 (DLF,HYF,IEF)

MSU TCF REVOLUTION 4R (SOD)(CHB)(DLF,HYF,IEF)  
**ILR IRON LADY 3106A ET**  
 4-C MISS P606 01J 355 (DLF,HYF,IEF)

DRF JWR PRINCE VICTOR 711 (SOD)  
 KBCR 19D DOMINETTE 122 (DLF,IEF)  
 THM DURANGO 4037 (SOD)(DLF,HYF,IEF)  
 CRR 420 ECLIPSE 688 (DLF,HYF,IEF)  
 FELTONS LEGEND 242 (SOD)(HYF)  
 MSU TCF RACHAEL ET 54N (DLF,HYF,IEF)  
 PW VICTOR BOOMER P606 (SOD)(DLF,HYF,IEF)  
 DIRT ROAD TORI P88 01J

CE	BW	WW	YW	Milk	REA	Marb	CHB
-1.2	2.6	58	89	30	0.61	0.01	107

**Checked safe to BR Trust 0217 3373, approx. due date 1/12/19.**

This Catapult x Revolution bred female excels in maternal strength, performance and REA. Just a three-year-old who has look and power. She is carrying the AI service of 3373, one of the biggest spread bulls in the Hereford business today.

## 23A | EXR CAT LADY 8002 (DLF,HYF,IEF)

1/1/2018 COW - P43876798 8002 Polled

KJ HVH 33N REDEEM 485T ET (SOD)(DLF,HYF,IEF)  
**H H FAST FORWARD 2268Z ET (DLF,HYF,IEF)**  
 HH MISS ADVANCE 6041S ET (DLF,HYF,IEF)

CRR 719 CATAPULT 109 (DLF,HYF,IEF)  
**6 MILE CAT LADY 524**  
 ILR IRON LADY 3106A ET

SHF RADAR M326 R125 (SOD)(DLF,HYF,IEF)  
 HVH OKSANA 4L 33N (DLF,HYF,IEF)  
 HH ADVANCE 3196N (SOD)(DLF,IEC)  
 HH MISS ADVANCE 2111 M  
 TH 122 711 VICTOR 719T (SOD)(CHB)(DLF,HYF,IEF)  
 CRR 4037 ECLIPSE 808 (DLF,HYF,IEF)  
 MSU TCF REVOLUTION 4R (SOD)(CHB)(DLF,HYF,IEF)  
 4-C MISS P606 01J 355 (DLF,HYF,IEF)

CE	BW	WW	YW	Milk	REA	Marb	CHB
11.5	0.9	57	95	26	0.47	0.05	105

A double-digit CED female with added performance and a stacked genetic pedigree.

Ranks in the top 2% for CED, top 10% for BW, top 20% for YW, top 25% for WW.

## 24 | EXR 90W 0220 ZAVRINA 5016 ET (DLF,HYF,IEF)

2/2/2015 COW - 43579666 5016 Horned

SHF RIB EYE M326 R117 (SOD)(DLF,HYF,IEF)  
**BOYD MASTERPIECE 0220 (CHB)(DLF,HYF,IEF)**  
 SSF P606 MS VICTOR 803 (DLF,HYF,IEF)

NJW FHF 9710 TANK 45P (SOD)(CHB)(DLF,HYF,IEF)  
**TH 618 45P MS DOM 90W (DLF,HYF,IEF)**  
 KBCR P606 MS DOM 618 (DLF,HYF,IEF)

KCF BENNETT 3008 M326 (SOD)(DLF,HYF,IEF)  
 HVH MISS HUDSON 83K 8M  
 PW VICTOR BOOMER P606 (SOD)(DLF,HYF,IEF)  
 MPH LADY COON EYES C330  
 FHF 8403 STARBUCK 19H (SOD)  
 GV 579 VICTORIA 9710 (DLF,HYF,IEF)  
 PW VICTOR BOOMER P606 (SOD)(DLF,HYF,IEF)  
 KBCR 262D MS DOM 101

CE	BW	WW	YW	Milk	REA	Marb	CHB
-12.2	6.1	57	91	28	0.56	0.17	118

**Checked safe to Boyd 31Z Blueprint 6153, approx. due date 1/26/19**

As evident in this offering Express Ranches has mated 90W to multiple sires and with great results. 5016 is moderate in her design, conservative marked and just built right from the ground up.

## 24A | EXR ZAVRINA 8054 (DLF,HYF,IEF)

2/16/2018 COW - P43886553 8054 Polled

MSU TCF REVOLUTION 4R (SOD)(CHB)(DLF,HYF,IEF)  
**EXR UPRISING 487 ET (DLF,HYF,IEF)**  
 BR TERRI 9130 ET (DLF,HYF,IEF)

BOYD MASTERPIECE 0220 (CHB)(DLF,HYF,IEF)  
**EXR 90W 0220 ZAVRINA 5016 ET (DLF,HYF,IEF)**  
 TH 618 45P MS DOM 90W (DLF,HYF,IEF)

FELTONS LEGEND 242 (SOD)(HYF)  
 MSU TCF RACHAEL ET 54N (DLF,HYF,IEF)  
 BR LANSING 3060  
 DM BR TERRI 646 ET (DLF,HYF,IEF)  
 SHF RIB EYE M326 R117 (SOD)(DLF,HYF,IEF)  
 SSF P606 MS VICTOR 803 (DLF,HYF,IEF)  
 NJW FHF 9710 TANK 45P (SOD)(CHB)(DLF,HYF,IEF)  
 KBCR P606 MS DOM 618 (DLF,HYF,IEF)

CE	BW	WW	YW	Milk	REA	Marb	CHB
-4.3	4.3	52	82	27	0.63	0.13	126

8054 is a well-designed female with maternal presence added power. She excels in REA and \$CHB.

Ranks in the top 3% for \$CHB, top 10% for REA, top 25% for Milk.





**LOT 25**

**25**

## EXR TERRI 6059 (DLF,HYF,IEF)

4/6/2016 COW - P43691032 6059 Polled

MSU TCF REVOLUTION 4R (SOD)(CHB)(DLF,HYF,IEF)

**EXR UPRISING 487 ET (DLF,HYF,IEF)**

BR TERRI 9130 ET (DLF,HYF,IEF)

NJW 98S R117 RIBEYE 88X ET (SOD)(DLF,HYF,IEF)

**EXR TERRI 490**

BR TERRI 9130 ET (DLF,HYF,IEF)

FELTONS LEGEND 242 (SOD)(HYF)

MSU TCF RACHAEL ET 54N (DLF,HYF,IEF)

BR LANSING 3060

DM BR TERRI 646 ET (DLF,HYF,IEF)

SHF RIB EYE M326 R117 (SOD)(DLF,HYF,IEF)

NJW 9126J DEW DOMINO 98S (DOD)(DLF,HYF,IEF)

BR LANSING 3060

DM BR TERRI 646 ET (DLF,HYF,IEF)

CE	BW	WW	YW	Milk	REA	Marb	CHB
8.5	-0.2	53	72	30	0.35	0.24	110

**Checked safe to BR Trust 0217 3373, approx. due date 2/22/19.**

A calving-ease female who is just a two-year-old, she calved at 23 months of age. Stems back to the powerful Express Ranches and Barber Ranch donor 9130. Unique pedigree with an impressive EPD profile.

Ranks in the top 3% for BW, top 10% for CED, Milk and Marb, top 25% for CHB.

**25A**

## EXR TERRI 8080 (DLF,HYF,IEF)

3/16/2018 COW - P43897566 8080 Polled

CRR 719 CATAPULT 109 (DLF,HYF,IEF)

**EXR SLINGSHOT 6021 (DLF,HYF,IEF)**

STAR SOPHISTICATION 256Z ET (DLF,HYF,IEF)

EXR UPRISING 487 ET (DLF,HYF,IEF)

**EXR TERRI 6059 (DLF,HYF,IEF)**

EXR TERRI 490

TH 122 711 VICTOR 719T (SOD)(CHB)(DLF,HYF,IEF)

CRR 4037 ECLIPSE 808 (DLF,HYF,IEF)

REMITALL ONLINE 122L (SOD)(CHB)(DLF,HYF,IEF)

MSU APOLLONIA 10M (DLF,HYF,IEF)

MSU TCF REVOLUTION 4R (SOD)(CHB)(DLF,HYF,IEF)

BR TERRI 9130 ET (DLF,HYF,IEF)

NJW 98S R117 RIBEYE 88X ET (SOD)(DLF,HYF,IEF)

BR TERRI 9130 ET (DLF,HYF,IEF)

CE	BW	WW	YW	Milk	REA	Marb	CHB
-1.4	3.1	57	79	28	0.38	0.2	101

Big ribbed, stout female with a tremendous look on the profile. She is sound in structure with added bone and foot. Be sure to find EXAR Terri 8080 sale day, she has all the parts and pieces!

Ranks in the top 15% for Marb, top 20% for WW and Milk.



**LOT 25A**



SPRING-CALVING SPLIT PAIRS



LOT 26

26 | WPF 9010 144U GINGER 2023 (DOD)  
1/29/2013 COW - P43402700 3023 Polled

TH SHR 605 57G BISMARCK 243R ET (SOD)(DLF,HYF,IEF)  
TH 75J 243R BAILOUT 144U ET (DLF,HYF,IEF)  
KB 615C NICKY 75J (DLF,IEF)

C MAUI JIM ET (CHB)(DLF,IEF)  
C MS MAUI JIM 9010  
C MS GAME PLAN 4097

RU 20X BOULDER 57G (SOD)  
YY 125Y PRIMROSE 605F  
SQUARE-D FULLBACK 615C  
KILMORE 359S NICKY 713D  
DM BR L1 DOMINO 146 (SOD)(DLF,IEF)  
C NOTICE ME ET (DLF,HYF,IEF)  
C GAME PLAN 2040 (SOD)(CHB)(DLF,IEF)  
IMR 343 MS ADVANCE 1017L

CE	BW	WW	YW	Milk	REA	Marb	CHB
1.8	2.6	52	86	28	0.37	-0.07	96

Checked safe to Boyd 31Z Blueprint 6153, approx. due date 1/13/19.  
A direct daughter of Bailout that stems back to the legendary donor for Colyer Hereford C Notice Me. Powerful in her design and is equipped with a gorgeous udder.  
Ranks in the top 20% for Milk.

26A | EXR GINGER 8012 (DLF,HYF,IEF)  
1/6/2018 COW - 43904539 8012 Horned

CRR 719 CATAPULT 109 (DLF,HYF,IEF)  
H WR SUSTAINABLE 5511 ET (DLF,HYF,IEF)  
H JOSLYN 820 ET (DLF,HYF,IEF)

TH 75J 243R BAILOUT 144U ET (DLF,HYF,IEF)  
WPF 9010 144U GINGER 2023 (DOD)  
C MS MAUI JIM 9010

TH 122 711 VICTOR 719T (SOD)(CHB)(DLF,HYF,IEF)  
CRR 4037 ECLIPSE 808 (DLF,HYF,IEF)  
GO EXCEL L18 (SOD)(DLF,HYF,IEF)  
C MS PURE GOLD 2003 (DLF,HYF,IEF)  
TH SHR 605 57G BISMARCK 243R ET (SOD)(DLF,HYF,IEF)  
KB 615C NICKY 75J (DLF,IEF)  
C MAUI JIM ET (CHB)(DLF,IEF)  
C MS GAME PLAN 4097

CE	BW	WW	YW	Milk	REA	Marb	CHB
2.2	3	54	94	29	0.23	-0.04	85

A well-designed female with tremendous depth of rib and flank, square hipped, short marked with added bone. 8012 is a power cow in the making.  
Ranks in the top 15% for Milk.



LOT 26A





LOT 27

## 27 | EXR 6060 144U JASLYNN 5076 ET (DLF,HYF,IEF)

2/13/2015 COW - P43583832 5076 Polled

TH SHR 605 57G BISMARCK 243R ET (SOD)(DLF,HYF,IEF) RU 20X BOULDER 57G (SOD)  
**TH 75J 243R BAILOUT 144U ET (DLF,HYF,IEF)** YY 125Y PRIMROSE 605F  
 KB 615C NICKY 75J (DLF,IEF) SQUARE-D FULLBACK 615C  
 C 212 DOMINO 4011 ET (SOD)(CHB)(DLF,HYF,IEF) KILMORLE 359S NICKY 713D  
**C 4011 MS DOM 6060** CL 1 DOMINO 212M (SOD)(DLF,IEF)  
 C MS PURE GOLD 3035 C MS PURE GOLD 2003 (DLF,HYF,IEF)  
 C -S PURE GOLD 98170 (SOD)(DLF,HYF,IEF)  
 HH MISS ADVANCE 104A (DOD)

CE	BW	WW	YW	Milk	REA	Marb	CHB
1.8	3.6	41	72	27	0.39	0.14	105

**Checked safe NJW 135U 10Y Hometown 27A, approx. due date 1/13/19.** 5076 is very attractive in her design and pattern with tremendous balance from end to end. Her mating to 27A will flat out work.

Full sister sells as Lot 28.

Ranks in the top 20% for Milk, top 25% for IMF.

## 27A | EXR JASLYNN 8022 (DLF,HYF,IEF)

1/12/2018 COW - 43876812 8022 Horned

KCF BENNETT 3008 M326 (SOD)(DLF,HYF,IEF) RRH MR FELT 3008 (SOD)(DLF,HYF,IEF)  
**NJW 735 M326 TRUST 100W ET (SOD)(CHB)(DLF,HYF,IEF)** KCF MISS 459 F284  
 NJW P606 72N DAYDREAM 735 (DLF,HYF,IEF) PW VICTOR BOOMER P606 (SOD)(DLF,HYF,IEF)  
 TH 75J 243R BAILOUT 144U ET (DLF,HYF,IEF) NJW 94J DEW 72N (DLF,HYF,IEF)  
**EXR 6060 144U JASLYNN 5076 ET (DLF,HYF,IEF)** TH SHR 605 57G BISMARCK 243R ET (SOD)(DLF,HYF,IEF)  
 C 4011 MS DOM 6060 KB 615C NICKY 75J (DLF,IEF)  
 C 212 DOMINO 4011 ET (SOD)(CHB)(DLF,HYF,IEF)  
 C MS PURE GOLD 3035

CE	BW	WW	YW	Milk	REA	Marb	CHB
4.2	1.5	46	78	33	0.63	0.19	125

Trust is an AI sire Express Ranches has used heavily with great success. The daughters milk and have beautiful udders in production. The bulls are stout, conservatively marked with eye appeal. 8022 has the look and an impressive EPD profile that excels in calving-ease, maternal and has value added carcass merit.

Ranks in the top 3% for \$CHB, top 4% for Milk, top 5% for REA, top 20% for BW and Marb.



LOT 28

## 28 | EXR 6060 144U KIANNI 5069 ET (DLF,HYF,IEF)

2/18/2015 COW - P43583842 5069 Polled

TH SHR 605 57G BISMARCK 243R ET (SOD)(DLF,HYF,IEF) RU 20X BOULDER 57G (SOD)  
**TH 75J 243R BAILOUT 144U ET (DLF,HYF,IEF)** YY 125Y PRIMROSE 605F  
 KB 615C NICKY 75J (DLF,IEF) SQUARE-D FULLBACK 615C  
 C 212 DOMINO 4011 ET (SOD)(CHB)(DLF,HYF,IEF) KILMORLE 359S NICKY 713D  
**C 4011 MS DOM 6060** CL 1 DOMINO 212M (SOD)(DLF,IEF)  
 C MS PURE GOLD 3035 C MS PURE GOLD 2003 (DLF,HYF,IEF)  
 C -S PURE GOLD 98170 (SOD)(DLF,HYF,IEF)  
 HH MISS ADVANCE 104A (DOD)

CE	BW	WW	YW	Milk	REA	Marb	CHB
-3.0	4.1	43	79	26	0.49	0.18	121

**Checked safe to BR Trust 0217 3373, approx. due date 2/12/19.**

Made just like her flushmate sister who sells as Lot 27. 5069 possesses more carcass merit than her sister while maintaining the maternal strength. Good young powerfully designed female!

Ranks in the top 3% for \$CHB, top 15% for Marb and REA, top 25% for Milk.

## 28A | EXR KIANNI 8073 (DLF,HYF,IEF)

3/10/2018 COW - 43888364 8073 Horned

MSU TCF REVOLUTION 4R (SOD)(CHB)(DLF,HYF,IEF) FELTONS LEGEND 242 (SOD)(HYF)  
**EXR UPRISING 487 ET (DLF,HYF,IEF)** MSU TCF RACHAEL ET 54N (DLF,HYF,IEF)  
 BR TERRI 9130 ET (DLF,HYF,IEF) BR LANSING 3060  
 DM BR TERRI 646 ET (DLF,HYF,IEF)  
 TH 75J 243R BAILOUT 144U ET (DLF,HYF,IEF) TH SHR 605 57G BISMARCK 243R ET (SOD)(DLF,HYF,IEF)  
**EXR 6060 144U KIANNI 5069 ET (DLF,HYF,IEF)** KB 615C NICKY 75J (DLF,IEF)  
 C 4011 MS DOM 6060 C 212 DOMINO 4011 ET (SOD)(CHB)(DLF,HYF,IEF)  
 C MS PURE GOLD 3035

CE	BW	WW	YW	Milk	REA	Marb	CHB
8.4	-2	37	67	26	0.57	0.3	115

This Uprising daughter has a strong numerical EPD profile that ranks in the upper echelon for calving-ease and carcass merit.

Ranks in the top 1% for BW, top 10% for CED, Marb, REA and \$CHB.



# SPRING-CALVING SPLIT PAIRS



## 29 | WPF 5135 409X SHEA 4098 ET

1/28/2014 COW - P43493714 4098 Polled

DRF JWR PRINCE VICTOR 711 (SOD)  
**TH 223 711 CONQUER 409X ET** (DLF,HYF,IEF)  
KBCR 19D DOMINETTE 223 (DLF,IEF)

CT NEWSLINE 99N (SOD)(DLF,HYF,IEF)  
**RV STARLINE 5136** (DLF,HYF,IEF)  
RV DYNASTY 1136 (DOD)

HRP THM VICTOR 109W 9329 (SOD)  
RHF 964 VICTRA 4057  
NUW 1Y WRANGLER 19D (SOD)(DLF,HYF,IEF)  
KBCR 631 DOMINETTE 066  
REMITALL ONLINE 122L (SOD)(CHB)(DLF,HYF,IEF)  
CT MISS ALPHA 706 (DOD)  
HA EMPEROR  
RV STARLITE 9136

CE	BW	WW	YW	Milk	REA	Marb	CHB
1.4	4.9	56	94	20	0.49	0.01	93

Checked safe to NJW 135U 10Y Hometown 27A, approx. due date 1/13/19.

Sired by Conquer 409X the full brother to 755T. If you like your females with added power, performance, eye-appeal and pretty udders you will love 4098.

Ranks in the top 10% for YW, top 15% for WW and REA.

## 29A | EXR SHEA 8024 (DLF,HYF,IEF)

1/13/2018 COW - P43876814 8024 Homo Polled

NUW 98S R117 RIBEYE 88X ET (SOD)(DLF,HYF,IEF)  
**LCX PERFECTO 11B ET** (DLF,HYF,IEF)  
WLL ZOEY 3Z (DLF,HYF,IEF)

TH 223 711 CONQUER 409X ET (DLF,HYF,IEF)  
**WPF 5135 409X SHEA 4098 ET**  
RV STARLINE 5136 (DLF,HYF,IEF)

SHF RIB EYE M326 R117 (SOD)(DLF,HYF,IEF)  
NUW 9126J DEW DOMINO 98S (DOD)(DLF,HYF,IEF)  
TH 122 711 VICTOR 719T (SOD)(CHB)(DLF,HYF,IEF)  
WLL VENUS 19X

DRF JWR PRINCE VICTOR 711 (SOD)  
KBCR 19D DOMINETTE 223 (DLF,IEF)  
CT NEWSLINE 99N (SOD)(DLF,HYF,IEF)  
RV DYNASTY 1136 (DOD)

CE	BW	WW	YW	Milk	REA	Marb	CHB
4.2	3.1	64	98	28	0.8	0.01	108

This Perfecto daughter is one big time power cow prospect. Elite EPD profile combined with excellent phenotype! Dark red, big bodied, stout with an elegant look. Ranks in the top 1% for REA, top 10% for WW, top 15% for YW, top 20% for Milk and \$CHB.



## 30 | TH 43P 719T CASSANDRA 462Y ET (DLF,HYF,IEF)

3/3/2011 COW - P43215359 462Y Polled

DRF JWR PRINCE VICTOR 711 (SOD)  
**TH 122 711 VICTOR 719T** (SOD)(CHB)(DLF,HYF,IEF)  
KBCR 19D DOMINETTE 122 (DLF,IEF)

BOYD Z86 LIMITED 8146  
**TH 121L 8146 CASSANDRA 43P** (DLF,HYF,IEF)  
KB 17F CASSANDRA 121L (DLF,IEF)

HRP THM VICTOR 109W 9329 (SOD)  
RHF 964 VICTRA 4057  
NUW 1Y WRANGLER 19D (SOD)(DLF,HYF,IEF)  
KBCR DOMINETTE 9112  
BAR JZ TRADITION 434V (SOD)(DLF,HYF,IEF)  
BOYD FASINATION Z86  
TEE-JAY 707B FALCON 17F  
HILLSIDE CASSANDRA 401D

CE	BW	WW	YW	Milk	REA	Marb	CHB
3.4	2.6	50	82	14	0.42	0.03	99

Checked safe to Boyd 31Z Blueprint, approx. due date 2/6/19.

A time-tested productive female that is youthful in her appearance with a lot of gas left in the tank. 462Y is elegant in her design with added length, bone and hip.

Ranks in the top 25% for REA.

## 30A | EXR CASSANDRA 8019 (DLF,HYF,IEF)

1/9/2018 COW - P43904542 8019 Polled

CRR 719 CATAPULT 109 (DLF,HYF,IEF)  
**H WR SUSTAINABLE 5511 ET** (DLF,HYF,IEF)  
H JOSLYN 820 ET (DLF,HYF,IEF)

TH 122 711 VICTOR 719T (SOD)(CHB)(DLF,HYF,IEF)  
**TH 43P 719T CASSANDRA 462Y ET** (DLF,HYF,IEF)  
TH 121L 8146 CASSANDRA 43P (DLF,HYF,IEF)

TH 122 711 VICTOR 719T (SOD)(CHB)(DLF,HYF,IEF)  
CRR 4037 ECLIPSE 808 (DLF,HYF,IEF)  
GO EXCEL L18 (SOD)(DLF,HYF,IEF)  
C MS PURE GOLD 2003 (DLF,HYF,IEF)

DRF JWR PRINCE VICTOR 711 (SOD)  
KBCR 19D DOMINETTE 122 (DLF,IEF)  
BOYD Z86 LIMITED 8146  
KB 17F CASSANDRA 121L (DLF,IEF)

CE	BW	WW	YW	Milk	REA	Marb	CHB
-1.0	3.6	56	89	22	0.35	-0.03	94

A Sustainable daughter with added bone and body. 8019 is going to be one powerful beef cow.

Ranks in the top 25% for WW.





## 31 | EXR 3208 69A KAMELIA 5054 (DLF,HYF,IEF)

1/19/2015 COW - P43574941 5054 Homo Polled

TH 22R 16S LAMBEAU 17Y (DLF,HYF,IEF)  
**TH 122U 17Y LOMBARDI 69A (DLF,HYF,IEF)**  
 TH 52P 243R HOLLY 122U (DLF,HYF,IEF)

GOLDEN OAK OUTCROSS 18U (SOD)(CHB)(DLF,HYF,IEF)  
**WPF 8045 18U KATHY 3208 ET**  
 H CATTLE KATE 8045 ET (DLF,HYF,IEF)

CE	BW	WW	YW	Milk	REA	Marb	CHB
1.8	2.2	50	88	25	0.38	0.17	97

**Checked safe to Boyd 31Z Blueprint 6153, approx. due date 2/6/19.**

The dam is a direct daughter of Cattle Kate who has produced in excess of \$300,000 in progeny sales. 5054 is a full sister to Anabelle, the former \$79,000 top seller at Hoffman Ranch. Sired by the calving-ease specialist Lombardi this female has the genetic power stacked in her pedigree. Unique genetic package out of a powerhouse dam. *Ranks in the top 20% for Marb, top 25% for YW.*



## 32 | EXR EMMA 6164 ET (DLF,HYF,IEF)

3/2/2016 COW - P43676528 6164 Homo Polled

H WCC/WB 668 WYARNO 9500 ET (DLF,HYF,IEF)  
**H/TSR/CHEZ/FULL THROTTLE ET (DLF,HYF,IEF)**  
 R SWEET RED WINE 039 (DLF,HYF,IEF)

MSU TCF REVOLUTION 4R (SOD)(CHB)(DLF,HYF,IEF)  
**WALKER MISS 4R 545 236 (DLF,HYF,IEF)**  
 WALKER MISS P606 06N 545 (DLF,HYF,IEF)

CE	BW	WW	YW	Milk	REA	Marb	CHB
-0.3	3.2	46	74	23	0.58	0.09	103

**Checked safe to KDL EB Trump D58, approx. due date 2/16/19.**

Here is a great opportunity to acquire a daughter of the \$60,000 donor dam 236. Full sibs have sold in previous sales and have commanded top dollar. 6064 is powerful hippe, big boned and super long fronted. Just a 2-year-old, 6164's future is bright. *Ranks in the top 10% for REA.*

## 31A | EXR KAMELIA 8067 (DLF,HYF,IEF)

3/5/2018 COW - P43886569 8067 Polled

MSU TCF REVOLUTION 4R (SOD)(CHB)(DLF,HYF,IEF)  
**EXR UPRISING 487 ET (DLF,HYF,IEF)**  
 BR TERRI 9130 ET (DLF,HYF,IEF)

TH 122U 17Y LOMBARDI 69A (DLF,HYF,IEF)  
**EXR 3208 69A KAMELIA 5054 (DLF,HYF,IEF)**  
 WPF 8045 18U KATHY 3208 ET

FELTONS LEGEND 242 (SOD)(HYF)  
 MSU TCF RACHAEL ET 54N (DLF,HYF,IEF)  
 BR LANSING 3060  
 DM BR TERRI 646 ET (DLF,HYF,IEF)  
 TH 22R 16S LAMBEAU 17Y (DLF,HYF,IEF)  
 TH 52P 243R HOLLY 122U (DLF,HYF,IEF)  
 GOLDEN OAK OUTCROSS 18U (SOD)(CHB)(DLF,HYF,IEF)  
 H CATTLE KATE 8045 ET (DLF,HYF,IEF)

CE	BW	WW	YW	Milk	REA	Marb	CHB
8.2	-0.4	46	75	25	0.51	0.28	101

8067 has a genetic package that consist of calving-ease, marbling and REA. She puts it all together in a very attractive package.

*Ranks in the top 4% for BW, top 10% for CED and Marb, top 20% for REA.*

## 32A | EXR EMMA 8060 (DLF,HYF,IEF)

2/25/2018 COW - 43937705 8060 Homo Polled

CRR 719 CATAPULT 109 (DLF,HYF,IEF)  
**KOLT CHICAGO 2004 ET (DLF,HYF,IEF)**  
 CHEZ STRAWBERRY WINE ET 204Z (DLF,HYF,IEF)

H/TSR/CHEZ/FULL THROTTLE ET (DLF,HYF,IEF)  
**EXR EMMA 6164 ET (DLF,HYF,IEF)**  
 WALKER MISS 4R 545 236 (DLF,HYF,IEF)

TH 122 711 VICTOR 719T (SOD)(CHB)(DLF,HYF,IEF)  
 CRR 4037 ECLIPSE 808 (DLF,HYF,IEF)  
 CRR ABOUT TIME 743 (SOD)(DLF,HYF,IEF)  
 R SWEET RED WINE 039 (DLF,HYF,IEF)  
 H WCC/WB 668 WYARNO 9500 ET (DLF,HYF,IEF)  
 R SWEET RED WINE 039 (DLF,HYF,IEF)  
 MSU TCF REVOLUTION 4R (SOD)(CHB)(DLF,HYF,IEF)  
 WALKER MISS P606 06N 545 (DLF,HYF,IEF)

CE	BW	WW	YW	Milk	REA	Marb	CHB
-2.5	4.0	59	95	25	0.63	0.01	116

Sired by the popular Chicago and out of the powerful 6164 this young female has a bright future. She possesses power and style!

*Ranks in the top 10% for REA.*



# SHOW PROSPECTS



LOT 33



LOT 34



LOT 35

## 33 | EXR HIGH CLASS KAT 8183 ET (DLF,HYF,IEF)

4/18/2018 COW - 43929652 8183 Horned

UPS TCC NITRO 1 ET (SOD)(CHB)(DLF,HYF,IEF)  
**BR NITRO AVENTUS 3116 ET (DLF,HYF,IEF)**  
 BR ABIGAIL 8130 ET (DLF,HYF,IEF)

CRR 719 CATAPULT 109 (DLF,HYF,IEF)  
**KOLT TR HIGH CLASS KAT 2220 ET (DLF,HYF,IEF)**  
 CHEZ STRAWBERRY WINE ET 204Z (DLF,HYF,IEF)

GH NEON 17N (SOD)(CHB)(DLF,HYF,IEF)  
 LCC TWO TIMIN 438 ET (DLF,HYF,IEF)  
 DM BR SOONER (CHB)(DLF,HYF,IEF)  
 BR GABRIELLE 5082 (DLF,HYF,IEF)  
 TH 122 711 VICTOR 719T (SOD)(CHB)(DLF,HYF,IEF)  
 CRR 4037 ECLIPSE 808 (DLF,HYF,IEF)  
 CRR ABOUT TIME 743 (SOD)(DLF,HYF,IEF)  
 R SWEET RED WINE 039 (DLF,HYF,IEF)

CE	BW	WW	YW	Milk	REA	Marb	CHB
-0.8	4.5	60	94	22	0.37	-0.03	99

This daughter of Aventus and out of the powerfully constructed Catapult x Strawberry Wine donor is one who keeps coming on each and every day, and will be one to find sale day. Classy Kat is dead on the profile, sound in structure, square hiped and is getting more rib and volume each and every day. Just an April pay attention here! Ranks in the top 10% for WW and 20% for YW.

## 34 | EXR HARLEY'S MILES 8042 (DLF,HYF,IEF)

2/7/2018 COW - 43933307 8042 Horned

CRR 719 CATAPULT 109 (DLF,HYF,IEF)  
**KOLT CHICAGO 2004 ET (DLF,HYF,IEF)**  
 CHEZ STRAWBERRY WINE ET 204Z (DLF,HYF,IEF)

C MILES MCKEE 2103 ET (DLF,HYF,IEF)  
**SULL HARLEY'S MILES 6152D ET (DLF,HYF,IEF)**  
 LCC TWO TIMIN 438 ET (DLF,HYF,IEF)

TH 122 711 VICTOR 719T (SOD)(CHB)(DLF,HYF,IEF)  
 CRR 4037 ECLIPSE 808 (DLF,HYF,IEF)  
 CRR ABOUT TIME 743 (SOD)(DLF,HYF,IEF)  
 R SWEET RED WINE 039 (DLF,HYF,IEF)  
 NJW 98S R117 RIBEYE 88X ET (SOD)(DLF,HYF,IEF)  
 C NOTICE ME ET (DLF,HYF,IEF)  
 REMITALL ONLINE 122L (SOD)(CHB)(DLF,HYF,IEF)  
 RST ROF REBA 28H

CE	BW	WW	YW	Milk	REA	Marb	CHB
-5.6	4.9	63	103	26	0.55	-0.05	128

A Chicago out of a powerfully designed Miles McKee daughter that is a direct daughter of "Harley." This female has purple running through her blood with unlimited potential.

Ranks in the top 3% for \$CHB, top 5% for YW, top 10% for WW, top 15% REA.

## 34A | FOUR EMBRYOS

C STOCKMAN 2059 ET  
**B&C STOCK OPTION 6026D**  
 B&C MISS TOP GUN 2031Z

C MILES MCKEE 2103 ET  
**SULL HARLEY'S MILES 6152D ET**  
 LCC TWO TIMIN 438 ET

NJW 98S R117 RIBEYE 88X ET  
 C NOTICE ME ET  
 GH ADAMS TOP GUN ET 516T  
 B&C MS CHRISTI 27031  
 NJW 98S R117 RIBEYE 88X ET  
 C NOTICE ME ET  
 REMITALL ONLINE 122L  
 RST ROF REBA 28H

	CE	BW	WW	YW	Milk	REA	Marb	CHB
SIRE	-7.7	6.7	55	83	29	0.67	0.11	115
DAM	-0.5	4.3	52	92	26	0.55	0.06	124

Guarantee 1 pregnancy if put in by a certified embryologist.

## 36 | EXR LEXUS 8171 ET (DLF,HYF,IEF)

3/15/2018 COW - P43899184 8171 Polled

CRR ABOUT TIME 743 (SOD)(DLF,HYF,IEF)  
**CHAC MASON 2214 (DLF,HYF,IEF)**  
 GKB 31 GRACE 7100 (DLF,HYF,IEF)

LSW WCC ABOUT TIME X06 (DLF,HYF,IEF)  
**EXR LEXUS 4208 ET (DLF,HYF,IEF)**  
 TCC MISS LEXUS 84 ET (DLF,HYF,IEF)

THM DURANGO 4037 (SOD)(DLF,HYF,IEF)  
 CRR D03 CASSIE 206 (DLF,HYF,IEF)  
 CCLC GKB PURE GOLD 31  
 L STAR GOLDIE P153  
 CRR ABOUT TIME 743 (SOD)(DLF,HYF,IEF)  
 WBCC WCC 69P MS RANGELAND U800 (DLF,HYF,IEF)  
 SLDK POSEIDON R09 ET  
 LCC TWO TIMIN 438 ET (DLF,HYF,IEF)

CE	BW	WW	YW	Milk	REA	Marb	CHB
-11.2	7.4	65	105	25	0.57	-0.13	120

A powerful cool-looking Mason daughter who stems back to the legendary Two Timin otherwise known as "Harley."

Ranks in the top 4% for WW, top 10% for REA and CHB.

## 35 | EXR OKSANA 8103 ET (DLF,HYF,IEF)

1/3/2018 COW - P43888398 8103 Polled

KCF BENNETT 3008 M326 (SOD)(DLF,HYF,IEF)  
**NJW 73S M326 TRUST 100W ET (SOD)(CHB)(DLF,HYF,IEF)**  
 NJW P606 72N DAYDREAM 73S (DLF,HYF,IEF)

SHF RADAR M326 R125 (SOD)(DLF,HYF,IEF)  
**LOEWEN R125 MISS 56T ET (DLF,HYF,IEF)**  
 HVH OKSANA 4L 33N (DLF,HYF,IEF)

RRH MR FELT 3008 (SOD)(DLF,HYF,IEF)  
 KCF MISS 459 F284  
 PW VICTOR BOOMER P606 (SOD)(DLF,HYF,IEF)  
 NJW 94J DEW 72N (DLF,HYF,IEF)  
 KCF BENNETT 3008 M326 (SOD)(DLF,HYF,IEF)  
 SHF POSTIVE MISS 73C M15 (DLF,HYF,IEF)  
 HVH KREMLIN 57F 108K  
 HVH GENETIC QUEEN 53H 4L (DLF,HYF,IEF)

CE	BW	WW	YW	Milk	REA	Marb	CHB
-2.9	4.1	71	117	25	0.65	0	136

A unique genetic package that combines the ever-popular performance sire Trust 100W and 56T the full sister to Redeem. This performance giant is red necked and red to the ground and is equipped with a big-time EPD profile.

Ranks in the top 1% for WW, YW, REA and \$CHB.





LOT 37

## 37 | EXR UNPARALLELED LASS 8030 (DLF,HYF,IEF)

1/25/2018 COW - P43904544 8030 Polled

CRR 719 CATAPULT 109 (DLF,HYF,IEF)  
**EXR SLINGSHOT 6021 (DLF,HYF,IEF)**  
 STAR SOPHISTICATION 256Z ET (DLF,HYF,IEF)

H/TSR/CHEZ/FULL THROTTLE ET (DLF,HYF,IEF)  
**EXR UNPARALLELED LASS 6118 ET (DLF,HYF,IEF)**  
 STAR UNPARALLELED LASS 174X (DLF,HYF,IEF)

TH 122 711 VICTOR 719T (SOD)(CHB)(DLF,HYF,IEF)  
 CRR 4037 ECLIPSE 808 (DLF,HYF,IEF)  
 REMITALL ONLINE 122L (SOD)(CHB)(DLF,HYF,IEF)  
 MSU APOLLONIA 10M (DLF,HYF,IEF)  
 H WCC/WB 668 WYARNO 9500 ET (DLF,HYF,IEF)  
 R SWEET RED WINE 039 (DLF,HYF,IEF)  
 GO 3196 ADVANCE S109 (SOD)(DLF,HYF,IEF)  
 RVP STAR 533P UNEQUALED 53U ET (DLF,HYF,IEF)

CE	BW	WW	YW	Milk	REA	Marb	CHB
-1.1	5	63	95	27	0.4	-0.12	104

8030 has a very fitting name Unparalleled! Beautifully designed female that has balance, body, hip bone and style.

Ranks in the top 10% for WW, top 20% for YW.

## 37A | FOUR EMBRYOS

C STOCKMAN 2059 ET  
**B&C STOCK OPTION 6026D**  
 B&C MISS TOP GUN 2031Z

H/TSR/CHEZ/FULL THROTTLE ET  
**EXR UNPARALLELED LASS 6118 ET**  
 STAR UNPARALLELED LASS 174X

NJW 98S R117 RIBEYE 88X ET  
 C NOTICE ME ET  
 GH ADAMS TOP GUN ET 516T  
 B&C MS CHRISTI 27031  
 H WCC/WB 668 WYARNO 9500 ET  
 R SWEET RED WINE 039  
 GO 3196 ADVANCE S109  
 RVP STAR 533P UNEQUALED 53U ET

	CE	BW	WW	YW	Milk	REA	Marb	CHB
SIRE	-7.7	6.7	55	83	29	0.67	0.11	115
DAM	-5.5	4.5	56	85	26	0.64	0.02	122

Guarantee one pregnancy if transferred by a certified embryologist.

## 38 | EXR CHIANTA 8072 (DLF,HYF,IEF)

3/9/2018 COW - 43888455 8072 Horned

CHURCHILL SENSATION 028X (SOD)(CHB)(DLF,HYF,IEF)  
**CRR 028X ROLL TIDE 612 (DLF,HYF,IEF)**  
 CRR 83Y AMBER 418 (DLF,HYF,IEF)

REMITALL ONLINE 122L (SOD)(CHB)(DLF,HYF,IEF)  
**KOLT TR CHIANTI 222 ET**  
 CHEZ STRAWBERRY WINE ET 204Z (DLF,HYF,IEF)

UPS DOMINO 3027 (SOD)(DLF,HYF,IEF)  
 CHURCHILL LADY 7202T ET (DLF,HYF,IEF)  
 NJW 98S 100W HANDSHAKE 83Y (CHB)(DLF,HYF,IEF)  
 CRR 021 AMBER 2102  
 REMITALL EMBRACER 8E (SOD)(CHB)(HYF)  
 REMITALL CATALINA 24H  
 CRR ABOUT TIME 743 (SOD)(DLF,HYF,IEF)  
 R SWEET RED WINE 039 (DLF,HYF,IEF)

CE	BW	WW	YW	Milk	REA	Marb	CHB
1.0	3.6	75	116	33	0.56	0.17	127

This horned Roll Tide daughter is quite the specimen. She balances well with plenty of middle and body dimension. Her mother is royally bred being an Online out of the many-time champion Strawberry Wine. This March heifer has explosive growth. Check out her facts and figures. She will be a highly productive cow in the future. Ranks in the top 1% for WW, YW; top 4% for MM, \$CHB; and top 15% for REA.



LOT 38

## 39 | EXR MISS LEXUS 8170 ET (DLF,HYF,IEF)

3/13/2018 COW - P43899183 8170 Polled

CHURCHILL SENSATION 028X (SOD)(CHB)(DLF,HYF,IEF)  
**CRR 028X ROLL TIDE 612 (DLF,HYF,IEF)**  
 CRR 83Y AMBER 418 (DLF,HYF,IEF)

LSW WCC ABOUT TIME X06 (DLF,HYF,IEF)  
**EXR MISS LEXUS 4203 ET (DLF,HYF,IEF)**  
 TCC MISS LEXUS 84 ET (DLF,HYF,IEF)

UPS DOMINO 3027 (SOD)(DLF,HYF,IEF)  
 CHURCHILL LADY 7202T ET (DLF,HYF,IEF)  
 NJW 98S 100W HANDSHAKE 83Y (CHB)(DLF,HYF,IEF)  
 CRR 021 AMBER 2102  
 CRR ABOUT TIME 743 (SOD)(DLF,HYF,IEF)  
 WBCC WCC 69P MS RANGELAND U800 (DLF,HYF,IEF)  
 SLDK POSEIDON R09 ET  
 LCC TWO TIMIN 438 ET (DLF,HYF,IEF)

CE	BW	WW	YW	Milk	REA	Marb	CHB
0.2	4.2	62	98	33	0.7	-0.01	126

Loaded with powerful breed-leading genetics. This polled Roll Tide daughter is easy on the eyes. She balances extremely well with an elegant front end. Long and level in her design and stout when you get behind her. Good bone and good footed this female is hard to miss. Her mother goes back to the immortal Two Timin cow. Plenty of growth and power bred in here. Ranks in the top 2% for REA; top 4% for \$CHB; top 5% for Milk; top 10% for WW; top 15% for YW.



LOT 39



HANNAH DAUGHTERS



40

EXR HANNAH 8105 ET

1/3/2018

COW - 43876820

8105

Horned

CRR ABOUT TIME 743 (SOD)(DLF,HYF,IEF)

CHAC MASON 2214 (DLF,HYF,IEF)

GKB 31 GRACE 7100 (DLF,HYF,IEF)

THM DURANGO 4037 (SOD)(DLF,HYF,IEF)

CRR D03 CASSIE 206 (DLF,HYF,IEF)

CCLC GKB PURE GOLD 31

L STAR GOLDIE P153

DM BR SOONER (CHB)(DLF,HYF,IEF)

BR GABRIELLE 5082 (DLF,HYF,IEF)

REMITALL ONLINE 122L (SOD)(CHB)(DLF,HYF,IEF)

DM L1 DOMINETTE 340

CE	BW	WW	YW	Milk	REA	Marb	CHB
2.3	3.8	62	91	26	0.58	0.03	113

A beautifully made daughter out of the 2015 Supreme Champion Bull in Denver, Mason. Her mother is one of the most complete and sound donors working at Express Ranches. She is exceptionally long made from tip to tail. Square made and stout hipped that comes into a functional back leg with plenty of bone. She will go the distance.

Ranks in the 10% for WW, REA; top 20% for \$CHB and top 25% for YW.

41

EXR HANNAH 8111 ET

1/6/2018

COW - 43876826

8111

Horned

CRR ABOUT TIME 743 (SOD)(DLF,HYF,IEF)

CHAC MASON 2214 (DLF,HYF,IEF)

GKB 31 GRACE 7100 (DLF,HYF,IEF)

THM DURANGO 4037 (SOD)(DLF,HYF,IEF)

CRR D03 CASSIE 206 (DLF,HYF,IEF)

CCLC GKB PURE GOLD 31

L STAR GOLDIE P153

DM BR SOONER (CHB)(DLF,HYF,IEF)

BR GABRIELLE 5082 (DLF,HYF,IEF)

REMITALL ONLINE 122L (SOD)(CHB)(DLF,HYF,IEF)

DM L1 DOMINETTE 340

CE	BW	WW	YW	Milk	REA	Marb	CHB
-2.0	4.7	67	101	26	0.39	0.03	102

This heifer is a flat out tank. She is packed full of power, but still maintains a maternal look. She is built wide in her undercarriage and has a wide set of pins. Then add the tremendous amount of rib and body she has, you have an unstoppable female. A full sister to Lot 40 she is backed by the outstanding Mason bull and the feature donor 0146.

Ranks in the top 2% for WW and top 10% for YW.



BR Hannah 0146 • Dam of Lots 40 & 41





**LOT 42**



**LOT 43**

**42**

## EXR MISS LEXUS 8142 ET (DLF,HYF,IEF)

2/2/2018 COW - P43899160 8142 Polled

CRR ABOUT TIME 743 (SOD)(DLF,HYF,IEF)  
**CHAC MASON 2214** (DLF,HYF,IEF)  
 GKB 31 GRACE 7100 (DLF,HYF,IEF)

THM DURANGO 4037 (SOD)(DLF,HYF,IEF)  
 CRR D03 CASSIE 206 (DLF,HYF,IEF)  
 CCLC GKB PURE GOLD 31  
 L STAR GOLDIE P153

LSW WCC ABOUT TIME X06 (DLF,HYF,IEF)  
**EXR MISS LEXUS 4203 ET** (DLF,HYF,IEF)  
 TCC MISS LEXUS 84 ET (DLF,HYF,IEF)

CRR ABOUT TIME 743 (SOD)(DLF,HYF,IEF)  
 WBCC WCC 69P MS RANGELAND U800 (DLF,HYF,IEF)  
 SLDK POSEIDON R09 ET  
 LCC TWO TIMIN 438 ET (DLF,HYF,IEF)

CE	BW	WW	YW	Milk	REA	Marb	CHB
-3.2	4.1	57	90	24	0.74	-0.02	124

EXR Miss Lexus is a February Mason daughter and a maternal sister to Lot 39. This Two Timin descendant is powerfully made in her design and balances out very well. She has that look of being a highly productive and stylish cow. Her EPD profile is full of growth and performance. She will be the kind that can raise a great one year after year.

Ranks in the top 2% for REA; top 4% for \$CHB and top 25% for WW.

**43**

## EXR LEXUS 8174 ET (DLF,HYF,IEF)

3/23/2018 COW - P43899186 8174 Polled

CRR ABOUT TIME 743 (SOD)(DLF,HYF,IEF)  
**CHAC MASON 2214** (DLF,HYF,IEF)  
 GKB 31 GRACE 7100 (DLF,HYF,IEF)

THM DURANGO 4037 (SOD)(DLF,HYF,IEF)  
 CRR D03 CASSIE 206 (DLF,HYF,IEF)  
 CCLC GKB PURE GOLD 31  
 L STAR GOLDIE P153

LSW WCC ABOUT TIME X06 (DLF,HYF,IEF)  
**EXR LEXUS 4208 ET** (DLF,HYF,IEF)  
 TCC MISS LEXUS 84 ET (DLF,HYF,IEF)

CRR ABOUT TIME 743 (SOD)(DLF,HYF,IEF)  
 WBCC WCC 69P MS RANGELAND U800 (DLF,HYF,IEF)  
 SLDK POSEIDON R09 ET  
 LCC TWO TIMIN 438 ET (DLF,HYF,IEF)

CE	BW	WW	YW	Milk	REA	Marb	CHB
-3.0	4.5	58	99	25	0.63	-0.14	122

A full sister to Lot 42. This female also follows the same type and kind. This heifer when analyzed shows amazing power low in her quarter and out from behind. She is stout hiped with plenty of foot and bone. EXR Lexus has performance and style. Females like this are hard to make, but will be worth her salt.

Ranks in the top 10% for YW, REA, \$CHB; top 20% for WW.



**EXR Lexus 4208 ET** • Dam of Lots 42 & 43





LOT 44

44

**EXR PRIMROSE 7070**
(DLF,HYF,IEF)

3/17/2017 COW - 43778570 7070 Horned

MSU TCF REVOLUTION 4R (SOD)(CHB)(DLF,HYF,IEF)  
**EXR UPRISING 487 ET** (DLF,HYF,IEF)  
BR TERRI 9130 ET (DLF,HYF,IEF)

FELTONS LEGEND 242 (SOD)(HYF)  
MSU TCF RACHAEL ET 54N (DLF,HYF,IEF)  
BR LANSING 3060  
DMA BR TERRI 646 ET (DLF,HYF,IEF)

NJW 73S W18 HOMETOWN 10Y ET (CHB)(DLF,HYF,IEF)  
**EXR PRIMROSE 4126 ET** (DLF,HYF,IEF)  
TH 67W 719T PRIMROSE 3Y (DLF,HYF,IEF)

SHF WONDER M326 W18 ET (CHB)(DLF,HYF,IEF)  
NUW P606 72N DAYDREAM 73S (DLF,HYF,IEF)  
TH 122 711 VICTOR 719T (SOD)(CHB)(DLF,HYF,IEF)  
TH 166S 45P PRIMROSE 67W (DOD)(DLF,HYF,IEF)

CE	BW	WW	YW	Milk	REA	Marb	CHB
6.4	1.2	56	82	29	0.64	0.21	115

**Checked safe to JCS 5216 Domino 3548, approx. due date is 2/17/19.**  
 This bred heifer put so many good things together it is hard to find a place to start. You have to appreciate how long made this heifer is. Then throw in that she is stout with a powerful long level hip. Flawless in her structure and built for the long haul. She has a functional front one third and has all the makings of becoming a breed leading donor female. She is out of the Revolution son Uprising and backed by the beautiful 10Y by Primrose cow family. High in quality both phenotypic and genetic. Calving-ease with plenty of growth and high carcass quality.  
*Ranks in the top 5% for REA; top 15% for BW, Milk, Marb, \$CHB and top 20% for CED*

LOT 45

45

**EXR MISS ADVANCE 7008**
(DLF,HYF,IEF)

1/8/2017 COW - 43770387 7008 Horned

TH 122 711 VICTOR 719T (SOD)(CHB)(DLF,HYF,IEF)  
**CRR 719 CATAPULT 109** (DLF,HYF,IEF)  
CRR 4037 ECLIPSE 808 (DLF,HYF,IEF)

DRF JWR PRINCE VICTOR 711 (SOD)  
KBCR 19D DOMINETTE 122 (DLF,IEF)  
THM DURANGO 4037 (SOD)(DLF,HYF,IEF)  
CRR 420 ECLIPSE 688 (DLF,HYF,IEF)

CL 1 DOMINO 297Z (DLF,HYF,IEF)  
**EXR MISS ADVANCE 4232 ET**  
HH MISS ADVANCE 6054S (DLF,HYF,IEF)

CL 1 DOMINO 860U (SOD)(DLF,HYF,IEF)  
CL 1 DOMINETTE 9134W 1ET (DOD)(DLF,HYF,IEF)  
CL 1 DOMINO 320N (SOD)(DLF,HYF,IEF)  
HH MISS ADVANCE 4053P

CE	BW	WW	YW	Milk	REA	Marb	CHB
2.9	2.3	52	88	31	0.41	-0.11	97

**Checked safe to LCX Perfecto 11B ET, approx. due date is 1/24/19.**  
 A good marked daughter of the legendary Catapult 109. Line One-bred on the bottom side, this female is the definition of cow power. Big, stout hiped with plenty of body and dimension. She is long necked with bit of extra style and presence. You will love how this female is built from the ground up. All that plus she is great marked and red to the ground.  
*Ranks in the top 10% for Milk.*

30 Express Ranches Hereford Event





**LOT 46**

**46**

## /S LADY BOOM TOWN 7166E (DLF,HYF,IEF)

2/2/2017 COW - P43776390 7166 Polled

NJW 73S W18 HOMETOWN 10Y ET (CHB)(DLF,HYF,IEF) SHF WONDER M326 W18 ET (CHB)(DLF,HYF,IEF)  
 /S JBB/AL BOOM TOWN 44608 (DLF,HYF,IEF) NJW P606 72N DAYDREAM 73S (DLF,HYF,IEF)  
 /S LADY THOR 1271Y (DLF,HYF,IEF) THR THOR 4029 (SOD)(CHB)(DLF,HYF,IEF)  
 /S LADY ADVISOR 9194W

SCHU-LAR RED BULL 18X (CHB)(DLF,HYF,IEF) R PUCKSTER 2013 (SOD)(DLF,HYF,IEF)  
 /S LADY RED BULL 548C (DLF,HYF,IEF) SCHU-LAR 24U OF 402 242 (DLF,HYF,IEF)  
 /S LADY EFFICIENT 3176A (DLF,HYF,IEF) /S EFFICIENT 0925 (CHB)(DLF,HYF,IEF)  
 /S LADY ADVANCE 594R

CE	BW	WW	YW	Milk	REA	Marb	CHB
10.6	0.3	51	83	25	0.65	0.25	127

Checked safe to EXR Slingshot 6021, approx. due date is 3/2/19.

This daughter of Boom Town backed by the highly productive Red Bull daughter will be hard to overlook sale day. She is super functional in terms of her design. Long bodied and made to be a strong, highly productive cow for many years. This bred heifer puts a lot of nice things together in a unique package. Big time for calving-ease and carcass traits.

Ranks in the top 3% for CED, \$CHB; top 4% for REA; top 10% for BW and top 15% for IMF.

**47**

## EXR GENETIC QUEEN 7142 ET (DLF,HYF,IEF)

3/3/2017 COW - P43784763 7142 Homo Polled

NJW 73S M326 TRUST 100W ET (SOD)(CHB)(DLF,HYF,IEF) KCF BENNETT 3008 M326 (SOD)(DLF,HYF,IEF)  
 NJW 33TB 100W TRUST 167Y (CHB)(DLF,HYF,IEF) NJW P606 72N DAYDREAM 73S (DLF,HYF,IEF)  
 BROOKVIEW 242 TEQUILA ROSE 33T (DLF,HYF,IEF) FELTONS LEGEND 242 (SOD)(HYF)  
 BROOKVIEW M48 MIS RILEY ROSE (DLF,HYF,IEF)

GK GENETIC EXPLOSION (SOD)(DLF,HYF,IEF) EXPLOSION (SOD)(DLF,HYF,IEF)  
 HVH GENETIC QUEEN 53H 4L (DLF,HYF,IEF) GK QUEEN TEN 391L  
 HVH MISS 512 35D 53H MM RSM STOCKMASTER 512 (SOD)(DLF,HYF,IEF)  
 HVH REBA 35D

CE	BW	WW	YW	Milk	REA	Marb	CHB
-0.3	4.3	51	86	21	0.53	0.14	111

Checked safe to UPS Sensation 2296 ET, approx. due date is 2/17/19.

A daughter of Trust 167Y balanced with strong maternal traits on the bottom side of her pedigree. She will raise big, sappy calves that will go straight to the keeper pen. She is functional in her appearance with supreme fleshing ability. Phenomenal in her structure that hits her stride every time. She has solid performance data that is balanced from start to finish.

Ranks in the top 15% for REA and \$CHB.



**LOT 47**





**LOT 48**

**48**

## EXR SUE 7015 (DLF,HYF,IEF)

1/16/2017 COW - P43770188 7015 Polled/Scurred

SHF WONDER M326 W18 ET (CHB)(DLF,HYF,IEF)  
**NJW 735 W18 HOMETOWN 10Y ET (CHB)(DLF,HYF,IEF)**  
 NJW P606 72N DAYDREAM 73S (DLF,HYF,IEF)

TH RANGELINE 743 THE TIMES R23W (DLF,HYF,IEF)  
**TH 110W R23 SUE 49Y (DLF,HYF,IEF)**  
 TH 102R 125T SUE 110W

KCF BENNETT 3008 M326 (SOD)(DLF,HYF,IEF)  
 SHF GOVERNESS 236G L37 (DLF,HYF,IEF)  
 PW VICTOR BOOMER P606 (SOD)(DLF,HYF,IEF)  
 NUW 94J DEW 72N (DLF,HYF,IEF)  
 CRR ABOUT TIME 743 (SOD)(DLF,HYF,IEF)  
 RANGELINE 14B MISS DIAMOND 19M  
 TH 805H 20N SPARTAN 125T (DLF,IEF)  
 TH 13M 44M SUE 102R

CE	BW	WW	YW	Milk	REA	Marb	CHB
6.3	2.4	53	87	30	0.21	0.16	85

Checked safe to EXR Slingshot 6021, approx. due date is 3/30/19.

A dark red, red to the ground daughter of the legendary 10Y. This female is the total package. She is heavy structured and carries a huge amount of rib and capacity. She is big and stout in her hip with plenty of natural width and thickness. She is long necked and maternal in her design. Her numbers are as good as she is with built in calving ease and added milk production.

Ranks in the top 10% for Milk and top 20% for CED.

**49**

## EXR LADY REDEEM 7002 (DLF,HYF,IEF)

1/1/2017 COW - 43770179 7002 Horned

CRR 719 CATAPULT 109 (DLF,HYF,IEF)  
**CRR 109 AMERICAN MADE 310 (DLF,HYF,IEF)**  
 CRR 433 NADEAN 758 (DLF,HYF,IEF)

RST TIMES A WASTIN 0124 (CHB)(DLF,HYF,IEF)  
**EXR LADY REDEEM 5104 ET (DLF,HYF,IEF)**  
 H RW LADY REDEEM 1231 ET (DLF,HYF,IEF)

TH 122 711 VICTOR 719T (SOD)(CHB)(DLF,HYF,IEF)  
 CRR 4037 ECIPSE 808 (DLF,HYF,IEF)  
 CRR 106M COLORADO 433  
 CRR 136 NADEAN 591  
 CRR ABOUT TIME 743 (SOD)(DLF,HYF,IEF)  
 RST MS 1000 BLAZER 2029 (DOD)(DLF,HYF,IEF)  
 KJ HVH 33N REDEEM 485T ET (SOD)(DLF,HYF,IEF)  
 JSF 12N LADY VAL 9T (DLF,HYF,IEF)

CE	BW	WW	YW	Milk	REA	Marb	CHB
0.5	3	62	104	21	0.52	0.08	108

Checked safe to LCX Perfecto 11B ET, approx. due date is 1/24/19.

A super, long-bodied female with a razor sharp neck. She is backed by timeless Hereford genetics with About Time, Redeem and Lady Val 9T all making an appearance. Moderate birth with exceptional performance and growth. This young female several breeding pieces that will fit into any operation. Her udder scores will be through the roof and she will raise big stout calves that have the potential to be contenders on the shavings.

Ranks in the top 5% for YW; top 10% for WW; top 20% for REA and top 25% for \$CHB.



**LOT 49**





**LOT 50**

**50**

## EXR LADY NITRO 7120 ET (DLF,HYF,IEF)

2/7/2017 COW - 43770384 7120 Horned

TH 122 711 VICTOR 719T (SOD)(CHB)(DLF,HYF,IEF)  
**CRR 719 CATAPULT 109 (DLF,HYF,IEF)**  
 CRR 4037 ECLIPSE 808 (DLF,HYF,IEF)

UPS TCC NITRO 1ET (SOD)(CHB)(DLF,HYF,IEF)  
**C LADY NITRO 0195 (DLF,HYF,IEF)**  
 C MS GAME PLAN 5161 (DOD)

DRF JWR PRINCE VICTOR 711 (SOD)  
 KBCR 19D DOMINETTE 122 (DLF,IEF)  
 THM DURANGO 4037 (SOD)(DLF,HYF,IEF)  
 CRR 420 ECLIPSE 688 (DLF,HYF,IEF)  
 GH NEON 17N (SOD)(CHB)(DLF,HYF,IEF)  
 LCC TWO TIMIN 438 ET (DLF,HYF,IEF)  
 C GAME PLAN 2040 (SOD)(CHB)(DLF,IEF)  
 C 026 MISS ADV 2036

CE	BW	WW	YW	Milk	REA	Marb	CHB
-2.9	4.4	70	108	24	0.57	0.07	124

**Checked safe to LCX Perfecto 11B ET, approx. due date is 2/16/19.**

A powerful made daughter of Catapult 109. This female just massively stout hiped and carries that power low into her quarter and stout featured. Long and balanced in her design and shoulder that lays into her body well. She is dark red and has plenty of eye pigment. She is the one that will raise high performing bulls and females that will cement her legacy in any cow herd.

Ranks in the top 1% for WW; top 3% for YW; top 5% for \$CHB and top 10% for REA.

**51**

## EXR DIANA 7170 ET (DLF,HYF,IEF)

4/10/2017 COW - 43798957 7170 Horned

CRR ABOUT TIME 743 (SOD)(DLF,HYF,IEF)  
**LED GKB LEGEND 108 ET (DLF,HYF,IEF)**  
 C 026 AMBER 3062

TH 64U 719T VICTOR 26X (DLF,HYF,IEF)  
**TCC BPF MS DIANA Z06 (DLF,HYF,IEF)**  
 TCC MS DIANA 01 (DLF,HYF,IEF)

THM DURANGO 4037 (SOD)(DLF,HYF,IEF)  
 CRR D03 CASSIE 206 (DLF,HYF,IEF)  
 HH ADVANCE 026K 1ET (CHB)(DLF,HYF,IEF)  
 C AMBER 1106 (DLF,HYF,IEF)

TH 122 711 VICTOR 719T (SOD)(CHB)(DLF,HYF,IEF)  
 TH 74S 103R MARI-JANE 64U (DLF,HYF,IEF)  
 CRR ABOUT TIME 743 (SOD)(DLF,HYF,IEF)  
 TCC MISS SHELBY 82 ET (DLF,HYF,IEF)

CE	BW	WW	YW	Milk	REA	Marb	CHB
-1.3	2.4	49	78	19	0.39	0.05	101

**Checked safe to UPS Sensation 2296 ET, approx. due date is 2/17/19.**

This dark red, red to the ground daughter of Legend 108 is very functional in terms of design and balance. She is long and level down over her hip and down her top. Her neck and shoulder tie in very well at the top of her shoulders. Clean made in her front one third. Her mother traces back to the National Champion Female at Denver, Diana 01. She has the potential to raise highly desirable calves for the show ring and functional production cattle.



**LOT 51**





**LOT 52**



**LOT 53**

## 52 | **EXR KEEPSAKE 6078** (DLF,HYF,IEF) 9/2/2016 COW - P43729937 6078 Polled

TH 122 711 VICTOR 719T (SOD)(CHB)(DLF,HYF,IEF) DRF JWR PRINCE VICTOR 711 (SOD)  
**CRR 719 CATAPULT 109** (DLF,HYF,IEF) KBCR 19D DOMINETTE 122 (DLF,IEF)  
 CRR 4037 ECLIPSE 808 (DLF,HYF,IEF) THM DURANGO 4037 (SOD)(DLF,HYF,IEF)  
 KCF BENNETT INFLUENCE Z80 (CHB)(DLF,HYF,IEF) KCF BENNETT REVOLUTION X51 (CHB)(DLF,HYF,IEF)  
**BOYD 40U KEEPSAKE 4172 ET** KCF MISS M326 R52 (DOD)(DLF,HYF,IEF)  
 KPY 517 KEEPSAKE 40U (DLF,HYF,IEF) SCHU-LAR 5N OF 9L 3008 (SOD)(CHB)(DLF,HYF,IEF)  
 NS P606 VICTORIA ET 517

CE	BW	WW	YW	Milk	REA	Marb	CHB
-6.2	6.5	68	120	24	0.62	-0.05	122

**Checked safe to EXR Uprising 487 ET, approx. due date is 10/25/18**

A beautifully made highly productive donor cow prospect by Catapult 109. Her maternal grand sire is Z80 that has been a bull with excellent phenotype and powerful genetics profile. She is very productive in her design and features fantastic growth and performance. Long and level down her top and out through her tail head. She is beautifully design in her head and neck. She just has that natural look of a functional cow. If you want to add pounds of performance in a package you will enjoy looking at add her to your cowherd.

Ranks in the top 1% for YW; top 2% for WW; top 5% for REA and top 10% for \$CHB.

## 53 | **EXR JENNA 6226 ET** (DLF,HYF,IEF) 9/11/2016 COW - P43740174 6226 Homo Polled

TF UNION 4037 734 (DLF,HYF,IEF) THM DURANGO 4037 (SOD)(DLF,HYF,IEF)  
**RW DM REMINGTON 734 4035** (DLF,HYF,IEF) TF NICKY 132 914 (DLF,IEF)  
 RW DM AVERY 18U 2016 ET (DLF,HYF,IEF) GOLDEN OAK OUTCROSS 18U (SOD)(CHB)(DLF,HYF,IEF)  
 DM BR SOONER (CHB)(DLF,HYF,IEF) DM 122L DOMINETTE 503 ET (DLF,HYF,IEF)  
**BR DM JENNA 7078 ET** (DLF,HYF,IEF) REMITALL ONLINE 122L (SOD)(CHB)(DLF,HYF,IEF)  
 DM L1 DOMINETTE 340 DM L1 DOMINETTE 901 (DLF,HYF,IEF)  
 DM BR L1 DOMINO 146 (SOD)(DLF,IEF)  
 DM L1 DOMINETTE 901 (DLF,HYF,IEF)

CE	BW	WW	YW	Milk	REA	Marb	CHB
2.5	3.6	60	91	26	0.61	0.06	114

**LOT 53A:** EXR Trust 167Y 8411. Bull born 9/1/18 sired by NJW 33TB 100W Trust 167Y. BW 77 lbs.

This stylish daughter of the \$70,000 Remington bull. She is elegant and stylish in her design. The pattern and stamp that this female will leave a set of calves will be impressive. She has an ample amount of depth and capacity. She is correct and flexible in her structure. The length of neck and cleanliness of chest floor is out of this world. She is going to be a brood cow matron and big time producer. Her mother is a Sooner donor dam that is producing solid, performance oriented cattle that are maternal giants. Ranks in the top 10% for REA; top 15% for WW; top 20% for \$CHB and top 25% for YW.

## 54 | **EXR OKSANA 6209 ET** (DLF,HYF,IEF) 8/2/2016 COW - P43740144 6209 Homo Polled

TF UNION 4037 734 (DLF,HYF,IEF) THM DURANGO 4037 (SOD)(DLF,HYF,IEF)  
**RW DM REMINGTON 734 4035** (DLF,HYF,IEF) TF NICKY 132 914 (DLF,IEF)  
 RW DM AVERY 18U 2016 ET (DLF,HYF,IEF) GOLDEN OAK OUTCROSS 18U (SOD)(CHB)(DLF,HYF,IEF)  
 SHF RADAR M326 R125 (SOD)(DLF,HYF,IEF) KCF BENNETT 3008 M326 (SOD)(DLF,HYF,IEF)  
**LOEWEN R125 MISS 56T ET** (DLF,HYF,IEF) SHF POSTIVE MISS 73C M15 (DLF,HYF,IEF)  
 HVH OKSANA 4L 33N (DLF,HYF,IEF) HVH KREMLIN 57F 108K  
 HVH GENETIC QUEEN 53H 4L (DLF,HYF,IEF)

CE	BW	WW	YW	Milk	REA	Marb	CHB
-2.6	5.3	80	116	19	0.74	-0.07	128

**LOT 54A:** EXR Oksana 8098. Heifer Calf born 08/21/2018 sired by JCS 240 Flintlock 5815. BW 85 lbs.

A fall-calving female who is a daughter of Remington and an exceptional full sister to Redeem. The genetic potential is unlimited and the amount of pounds of performance is unmatched. A future donor prospect who will make an immediate impact on any herd. Her calves will put you into a higher tax bracket.

Ranks in the top 1% for WW, YW; top 2% for REA, \$CHB.

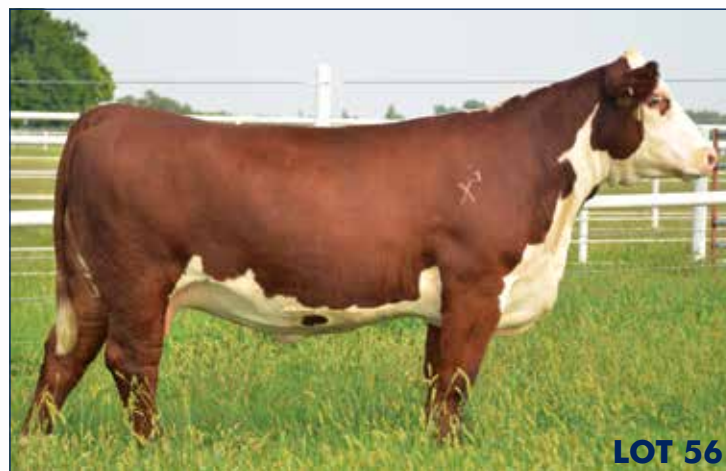


**RW DM Remington 734 4035 • Sire of Lots 53, 54 & 56**





LOT 55



LOT 56

55

## EXR HANNAH 6214 ET (DLF,HYF,IEF)

9/3/2016 COW - P43740147 6214 Polled

KJ HVH 33N REDEEM 485T ET (SOD)(DLF,HYF,IEF) SHF RADAR M326 R125 (SOD)(DLF,HYF,IEF)  
**H BK CCC SR GAME CHANGER ET** (CHB)(DLF,HYF,IEF) HVH OKSANA 4L 33N (DLF,HYF,IEF)  
 NJW 78P 63N LADYSPORT 51W ET (DLF,HYF,IEF) TH JWR SOP 16G 57G TUNDRA 63N (DLF,HYF,IEF)  
 NJW BW LADYSPORT DEW 78P ET (DLF,HYF,IEF)  
 BR CURRENCY 8144 ET (DLF,HYF,IEF) DM BR SOONER (CHB)(DLF,HYF,IEF)  
**BR HANNAH 0146 (DLF,HYF,IEF)** BR GABRIELLE 5082 (DLF,HYF,IEF)  
 BR DM HANNAH 6103 ET (DLF,HYF,IEF) REMITALL ONLINE 122L (SOD)(CHB)(DLF,HYF,IEF)  
 DM L1 DOMINETTE 340

CE	BW	WW	YW	Milk	REA	Marb	CHB
0.6	3.7	64	91	26	0.63	-0.09	127

**LOT 55A:** EXR Trust 167Y 8419. Bull born 9/5/18 sired by NJW 33TB 100W Trust 167Y. BW 67 lbs.

This stout, powerful hipped young female is sired by Game Changer. Her beautiful design up through her front one third and deep soggy middle is second to none. She is level and wide through her hip and stand on a big foot and bone. Her mother is the phenomenal donor female that traces back to Sooner and Online. A proven pedigree for high performance and pounds of productions in very stylish and elegant package.

Ranks in the top 4% for \$CHB; top 5% for WW, REA; top 25% for YW.

56

## EXR DIANA 6076 (DLF,HYF,IEF)

9/1/2016 COW - P43729936 6076 Homo Polled

TF UNION 4037 734 (DLF,HYF,IEF) THM DURANGO 4037 (SOD)(DLF,HYF,IEF)  
**RW DM REMINGTON 734 4035 (DLF,HYF,IEF)** TF NICKY 132 914 (DLF,IEF)  
 RW DM AVERY 18U 2016 ET (DLF,HYF,IEF) GOLDEN OAK OUTCROSS 18U (SOD)(CHB)(DLF,HYF,IEF)  
 TH 64U 719T VICTOR 26X (DLF,HYF,IEF) DM 122L DOMINETTE 503 ET (DLF,HYF,IEF)  
**TCC BPF MS DIANA Z06 (DLF,HYF,IEF)** TH 122 711 VICTOR 719T (SOD)(CHB)(DLF,HYF,IEF)  
 TCC MS DIANA 01 (DLF,HYF,IEF) TH 74S 103R MARI-JANE 64U (DLF,HYF,IEF)  
 CRR ABOUT TIME 743 (SOD)(DLF,HYF,IEF)  
 TCC MISS SHELBY 82 ET (DLF,HYF,IEF)

CE	BW	WW	YW	Milk	REA	Marb	CHB
-2.8	4.5	72	101	22	0.72	0.03	122

**Checked safe to EXR Uprising 487, approx. due date is 10/10/18.**

An own daughter of the \$70,000 Remington out of one of the most proven mating's in the breed. Her mother is a 719T daughter by the national Champion Diana 01. A female with explosive growth and performance. She will work to anything you want to breed too. Classic genetics in a female that was purpose built for cow power and performance.

Ranks in the top 1% for WW; top 2% for REA; top 10% for YW and top 20% for \$CHB.

57

## EXR PRIMROSE 6075 (DLF,HYF,IEF)

8/27/2016 COW - 43729935 6075 Horned

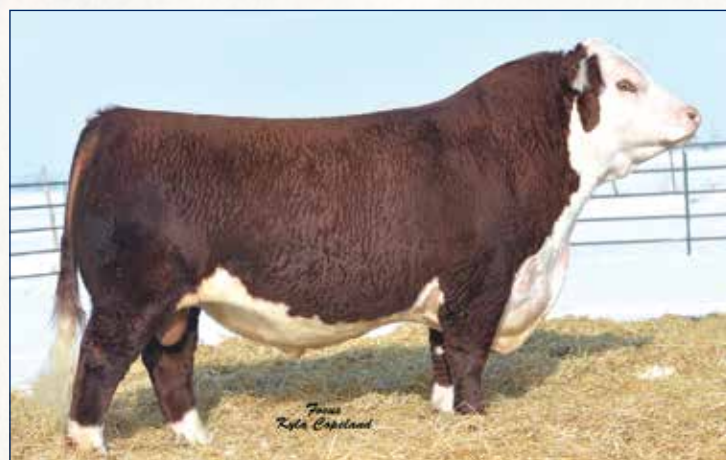
TH 122 711 VICTOR 719T (SOD)(CHB)(DLF,HYF,IEF) DRF JWR PRINCE VICTOR 711 (SOD)  
**CRR 719 CATAPULT 109 (DLF,HYF,IEF)** KBCR 19D DOMINETTE 122 (DLF,IEF)  
 CRR 4037 ECLIPSE 808 (DLF,HYF,IEF) THM DURANGO 4037 (SOD)(DLF,HYF,IEF)  
 CRR 420 ECLIPSE 688 (DLF,HYF,IEF)  
 NJW 73S W18 HOMETOWN 10Y ET (CHB)(DLF,HYF,IEF) SHF WONDER M326 W18 ET (CHB)(DLF,HYF,IEF)  
**EXR PRIMROSE 4128 ET** NJW P606 72N DAYDREAM 73S (DLF,HYF,IEF)  
 TH 67W 719T PRIMROSE 3Y (DLF,HYF,IEF) TH 122 711 VICTOR 719T (SOD)(CHB)(DLF,HYF,IEF)  
 TH 166S 45P PRIMROSE 67W (DOD)(DLF,HYF,IEF)

CE	BW	WW	YW	Milk	REA	Marb	CHB
-3.8	3.5	58	94	33	0.56	-0.1	102

**LOT 57A:** EXR Trust 167Y 8404. Bull born 8/27/18 sired by NJW 33TB 100W Trust 167Y. BW 69 lbs.

A highly productive daughter by the influential Catapult 109 bull. His dam is one of the most proven mating's in the Hereford breed with 10Y and 719T in the background. She is very balance in terms of EPDs and extra growth and performance. A female that is beautiful in her design and balance. This potential donor is loaded with milk and will be a has added look and style.

Ranks in the top 4% for Milk; top 10% for REA; top 20% for WW and YW



CRR 719 Catapult 109 • Sire of Lot 57



755T DAUGHTER



LOT 58

58 | TH 400U 755T PRIMROSE 233B (DLF,HYF,IEF)

3/4/2014 COW - P43464732 233B Polled

DRF JWR PRINCE VICTOR 711 (SOD)  
TH 223 711 VICTOR 755T (DLF,HYF,IEF)  
KBCR 19D DOMINETTE 223 (DLF,IEF)  
NJW FHF 9710 TANK 45P (SOD)(CHB)(DLF,HYF,IEF)  
TH 605F 45P PRIMROSE 400U ET (DLF,HYF,IEF)  
YY 125Y PRIMROSE 605F  
HRP THM VICTOR 109W 9329 (SOD)  
RHF 964 VICTRA 4057  
NJW 1Y WRANGLER 19D (SOD)(DLF,HYF,IEF)  
KBCR 631 DOMINETTE 066  
FHF 8403 STARBUCK 19H (SOD)  
GV 579 VICTORIA 9710 (DLF,HYF,IEF)  
DAVIS 81W TOP CAT ET 125Y  
CFCW MS ENERGZR LECTRC 5B

CE	BW	WW	YW	Milk	REA	Marb	CHB
-4.4	4.5	63	96	30	0.4	0.09	89

Due before sale day to NJW 33TB 100W Trust 167Y.

This long-made daughter of 755T is the ideal model of a beef production cow. She is loaded with a very solid maternal pedigree and it shows when you analyze her visually and well as genetically. Just look at how well she is put together. She is huge topped and shows a huge amount of body depth and capacity. She is built with a tremendous amount of substance and power. She is a donor cow in the making.

Ranks in the top 10% for WW; top 15% YW and Milk.



NJW 735 M326 Trust 100W ET • Sire of Lot 58B Embryos

58B | THREE EMBRYOS

KCF BENNETT 3008 M326  
NJW 735 M326 TRUST 100W ET  
NJW P606 72N DAYDREAM 735  
RRH MR FELT 3008  
KCF MISS 459 F284  
PW VICTOR BOOMER P606  
NJW 94J DEW 72N  
TH 223 711 VICTOR 755T  
TH 400U 755T PRIMROSE 233B  
TH 605F 45P PRIMROSE 400U ET  
DRF JWR PRINCE VICTOR 711  
KBCR 19D DOMINETTE 223  
NJW FHF 9710 TANK 45P  
YY 125Y PRIMROSE 605F

	CE	BW	WW	YW	Milk	REA	Marb	CHB
SIRE	-3.2	3.7	67	117	39	0.93	0.26	160
DAM	-4.4	4.5	63	96	30	0.4	0.09	89

Guarantee 1 pregnancy if put in by a certified embryologist.





**LOT 59**

## 59 | EXR DOMINETTE 5146 ET

4/6/2015 COW - P43570452 5146 Polled

SHF WONDER M326 W18 ET (CHB)(DLF,HYF,IEF)  
**NJW 735 W18 HOMETOWN 10Y ET (CHB)(DLF,HYF,IEF)**  
 NJW P606 72N DAYDREAM 73S (DLF,HYF,IEF)

DRF JWR PRINCE VICTOR 711 (SOD)  
**TH 122 711 DOMINETTE 436X ET (DLF,HYF,IEF)**  
 KBCR 19D DOMINETTE 122 (DLF,IEF)

KCF BENNETT 3008 M326 (SOD)(DLF,HYF,IEF)  
 SHF GOVERNESS 236G L37 (DLF,HYF,IEF)  
 PW VICTOR BOOMER P606 (SOD)(DLF,HYF,IEF)  
 NJW 94J DEW 72N (DLF,HYF,IEF)  
 HRP THM VICTOR 109W 9329 (SOD)  
 RHF 964 VICTRA 4057  
 NJW 1Y WRANGLER 19D (SOD)(DLF,HYF,IEF)  
 KBCR DOMINETTE 9112

CE	BW	WW	YW	Milk	REA	Marb	CHB
8.0	0.2	52	84	33	0.44	0.36	94

### Due before sale day to CRR 109 Catapult 322.

This excellent 10y that is built wide and extremely impressive from behind. She is long and angular in her front end and good necked. She is dark cherry red and has a solid amount of eye pigment. Her dam is the donor cow supreme 436X that has raised high sellers for Express Ranches. She will be a sale day feature and a future donor that add calving ease with a balanced EPD profile and supreme carcass traits.

Ranks in the top 2% for Marb; top 4% for BW; top 10% for CED and top 20% for REA.



**LOT 60**

## 60 | EXR RITA 5173 ET

9/1/2015 COW - P43623106 5173 Polled

KJ HVH 33N REDEEM 485T ET (SOD)(DLF,HYF,IEF)  
**H BK CCC SR GAME CHANGER ET (CHB)(DLF,HYF,IEF)**  
 NJW 78P 63N LADYSPORT 51W ET (DLF,HYF,IEF)

TH 525 63N TUNDRA 72W (DLF,HYF,IEF)  
**TH 71U 72W RITA 198Z (DLF,HYF,IEF)**  
 TH 7N 45P RITA 71U (DLF,HYF,IEF)

SHF RADAR M326 R125 (SOD)(DLF,HYF,IEF)  
 HVH OKSANA 4L 33N (DLF,HYF,IEF)  
 TH JWR SOP 16G 57G TUNDRA 63N (SOD)(DLF,HYF,IEF)  
 NJW BW LADYSPORT DEW 78P ET (DLF,HYF,IEF)  
 TH JWR SOP 16G 57G TUNDRA 63N (SOD)(DLF,HYF,IEF)  
 KBCR P606 FAIRVIEW 525 (DLF,HYF,IEF)  
 NJW FHF 9710 TANK 45P (SOD)(CHB)(DLF,HYF,IEF)  
 TH 814H 3L RITA 7N (DOD)(DLF,HYF,IEF)

CE	BW	WW	YW	Milk	REA	Marb	CHB
0.2	2.9	52	83	25	0.53	0.04	122

### Due before sale day to RW DM Remington 734.

A super stylish and balanced daughter of Game Changer. She is a stout, level hipped and good legged cow. She stands out when you analyze her front end and neck. She is made super clean necked and opens up wide into her rib cage. Her pedigree is backed by breed leading sires and brood cow matrons. This cow will have an immediate impact on your bottom line.

Ranks in the top 4% for \$CHB and top 10% for REA.





LOT 61

**61** | **EXR NICKY 409** (DLF,HYF,IEF)  
2/14/2014 COW - P43462907 409 Homo Polled

KCF BENNETT REVOLUTION X51 (CHB)(DLF,HYF,IEF)  
**KCF BENNETT INFLUENCE Z80** (CHB)(DLF,HYF,IEF)  
KCF MISS M326 R52 (DOD)(DLF,HYF,IEF)

TH 62S 45P TANK 126X (DLF,HYF,IEF)  
**TH 97S 126X NICKY 48Z** (DLF,HYF,IEF)  
TH 56H 26N NICKY 97S (DOD)

MSU TCF REVOLUTION 4R (SOD)(CHB)(DLF,HYF,IEF)  
KCF MISS PROFICIENT U201 (DLF,HYF,IEF)  
KCF BENNETT 3008 M326 (SOD)(DLF,HYF,IEF)  
KCF MISS 774 N45

NUW FHF 9710 TANK 45P (SOD)(CHB)(DLF,HYF,IEF)  
TH 266K 63N LINNY NED 62S  
S&S 8K KODIAK 26N  
KB 38D NICKY 56H

CE	BW	WW	YW	Milk	REA	Marb	CHB
5.3	2.7	49	85	13	0.42	0.26	96

**LOT 61A:** EXR Nicky 8427. Heifer born 9/1/2018 sired by Churchill Stud 3134A. BW 78 lbs.  
Sired by the resident performance herd sire Z80 and out of a powerful yet maternal tank daughter. Moderate birth female with value added carcass merit.  
Ranks in the top 10% for Marb, top 20% for CED, top 25% for REA.

**62** | **BOYD 40U KEPSAKE 4172 ET**  
10/6/2014 COW - P43526577 4172 Polled

KCF BENNETT REVOLUTION X51 (CHB)(DLF,HYF,IEF)  
**KCF BENNETT INFLUENCE Z80** (CHB)(DLF,HYF,IEF)  
KCF MISS M326 R52 (DOD)(DLF,HYF,IEF)

SCHU-LAR 5N OF 9L 3008 (SOD)(CHB)(DLF,HYF,IEF)  
**KPY 517 KEPSAKE 40U** (DLF,HYF,IEF)  
NS P606 VICTORIA ET 517

MSU TCF REVOLUTION 4R (SOD)(CHB)(DLF,HYF,IEF)  
KCF MISS PROFICIENT U201 (DLF,HYF,IEF)  
KCF BENNETT 3008 M326 (SOD)(DLF,HYF,IEF)  
KCF MISS 774 N45

RRH MR FELT 3008 (SOD)(DLF,HYF,IEF)  
SCHU-LAR 9L OF 1F 821C  
PW VICTOR BOOMER P606 (SOD)(DLF,HYF,IEF)  
BAR B 324 KEPSAKE 701

CE	BW	WW	YW	Milk	REA	Marb	CHB
-2.9	5.6	65	114	17	0.53	0.25	118

**Due before sale day to UPS Sensation 2296 ET.**  
This young Z80 daughter excels in performance ranking in the upper echelon for WW and YW EPDs among parent females. She traces back to the Keepsake cow family that is known for maternal strength and strong phenotype.  
Ranks in the top 1% for YW, top 2% for WW, top 5% for \$CHB, top 10% for Marb and REA.



LOT 62



## 63

### EXR RUBY 5030 (DLF,HYF,IEF)

9/11/2015 COW - P43628564 5030 Homo Polled

KCF BENNETT REVOLUTION X51 (CHB)(DLF,HYF,IEF)  
**KCF BENNETT INFLUENCE Z80 (CHB)(DLF,HYF,IEF)**  
 KCF MISS M326 R52 (DOD)(DLF,HYF,IEF)

MSU TCF REVOLUTION 4R (SOD)(CHB)(DLF,HYF,IEF)  
 KCF MISS PROFICIENT U201 (DLF,HYF,IEF)  
 KCF BENNETT 3008 M326 (SOD)(DLF,HYF,IEF)  
 KCF MISS 774 N45  
 FHF 8403 STARBUCK 19H (SOD)  
 GV 579 VICTORIA 9710 (DLF,HYF,IEF)  
 RANGELINE 122L DATELINE 34N  
 DR OPERA 1G 23J

NJW FHF 9710 TANK 45P (SOD)(CHB)(DLF,HYF,IEF)  
**TH 775 45P RUBY 60W (DLF,HYF,IEF)**  
 RANGELINE 23J RUBY 77S (DOD)



CE	BW	WW	YW	Milk	REA	Marb	CHB
4.6	2.5	56	86	17	0.56	0.16	109

**LOT 63A:** EXR Ruby 8402. Heifer born 8/27/18 sired by NJW 33TB 100W Trust 167Y. BW 65 lbs.

A powerful Z80 daughter that is out of a paternal sister to 90W. This moderate birth with strong carcass merit is just a three-year old and stems back to a powerful maternal cow family.

Ranks in the top 10% for REA, top 15% for \$CHB, top 20% for Marb, top 25% for CED.



**KCF Bennett Influence Z80 • Sire of Lot 63**

## 64

### THREE EMBRYOS

UPS SENSATION 2296 ET  
**H DEBERARD 7454 ET**  
 RST GAT NST Y79D LADY 54B ET

UPS DOMINO 3027  
**/S LADY DOMINO 2225Z**  
 /S LADY ADVANCE 8099U

CHURCHILL SENSATION 028X  
 UPS JT MISS NEON 7811 ET  
 WORR OWEN TANERAY Y79D ET  
 H H LADY MAXIUM 111 ET  
 CL 1 DOMINO 9126J  
 UPS MISS DIAMOND 1353  
 HH ADVANCE 286M 1ET  
 /S LADY LOGIC 4023P ET

	CE	BW	WW	YW	Milk	REA	Marb	CHB
<b>SIRE</b>	-3.7	5.3	64	103	24	0.96	0.16	138
<b>DAM</b>	10.0	1.1	45	75	33	0.51	0.16	93

Guarantee 1 pregnancy if put in by a certified embryologist.



**H Deberard 7454 ET • Sire of Lot 64 Embryos**









# CONGRATULATIONS TO THE **Ex432** JUNIORS NATIONWIDE WHO HAVE PURCHASED HEIFERS FROM EXPRESS RANCHES AND HAVE RECEIVED OVER **\$4,100,000** IN SCHOLARSHIP AWARDS

## EXPRESS RANCHES SCHOLARSHIP PROGRAM

### INTRODUCTION

The Express Ranches Progressive Junior Scholarship Program is designed to help America's youth to continue their education by enrolling in undergraduate courses of studies at an accredited two or four year college, university or vocational technical school. It is designed for juniors who want to accumulate scholarships year after year.

### ELIGIBILITY

1. The animals must be purchased from Express Ranches at public auction or by private treaty.
2. The animals must be bought and registered by a junior and be in his/her name.
3. The year of purchase and receipt of payment determines which year you will qualify under the graduated program: If you purchased and paid for an animal in calendar year 1995, that is year one. Animals purchased and paid for in subsequent calendar years qualify you for additional years. If any year is missed, the future purchase will be credited to the next year of purchases. (i.e. If you purchased in 2000 and 2002, the 2002 would be the second year of purchases.)



### SCHOLARSHIP PROGRAM PAY SCHEDULE

Year(s) of Purch.	1st Yr.	2nd Yr.	3rd Yr.	4th Yr.	5th Yr.	Steers
<b>LEVEL I: National Junior Show</b>						
Grand	\$5,000	\$10,000	\$15,000	\$20,000	\$25,000	\$1,500
Reserve Grand	\$4,000	\$8,000	\$12,000	\$16,000	\$20,000	\$1,000
Division Grand	\$2,000	\$4,000	\$6,000	\$8,000	\$10,000	
Div. Rs. Grand	\$1,500	\$3,000	\$4,500	\$6,000	\$7,500	
Class Winner	\$1,000	\$1,500	\$2,000	\$2,500	\$3,000	
<b>LEVEL II: Nationally Sanctioned Regional Heifer Shows</b>						
Grand	\$2,000	\$2,500	\$3,000	\$3,500	\$4,000	\$1,000
Reserve Grand	\$1,500	\$2,000	\$2,500	\$3,000	\$3,500	\$500
Division Grand	\$1,000	\$1,500	\$2,000	\$2,500	\$3,000	
Div. Rs. Grand	\$500	\$1,000	\$1,500	\$2,000	\$2,500	
<b>LEVEL III: State Fair 4-H and FFA Junior Shows</b>						
Grand	\$1,500	\$2,000	\$2,500	\$3,000	\$3,500	\$1,000
Reserve Grand	\$500	\$1,000	\$1,500	\$2,000	\$2,500	\$500
<b>LEVEL IV: State Junior Field Day and County Junior Shows</b>						
Grand	\$500	\$500	\$500	\$500	\$500	\$500
Reserve Grand	\$250	\$250	\$250	\$250	\$250	\$250

4. The year of purchase (one, two, three, four or five), not the year of the show, will determine which scholarship year will be honored.

5. If the animal wins more than one year in the same show, the scholarship winnings will be honored both years from the year purchase was made.

6. In appreciation for purchasing cattle from Express Ranches in 1994, we will count 1994 as year one for those wonderful buyers. Thank you for your confidence in us.

To qualify for each scholarship, the student is required to submit the proper information of verification on the Express Ranches Verification Form and provide proof of winning. The calculation for the Junior Scholarship will begin in the month the verification papers arrive at Express Ranches.

Each **Express Ranches Progressive Junior Scholarship** will be funded by Express Ranches in the name of recipient in the Express Ranches Scholarship Program Account.

The **Express Ranches Progressive Junior Scholarship will have a 5% to 10% Scholarship Award added annually which is set based on market conditions, and will be reviewed annually by the advisory board**, from the month of beginning until the funds are properly distributed to the accredited two- or four-year college, university or vocational-technical school. The Express Ranch Scholarship Program will process scholarship awards, to the schools, in mid-August and mid-December. Checks will be made payable jointly to the recipient and to the educational institution and must be endorsed by both. Qualified expenses include tuition, books, related fees, and room and board. Qualifiers must complete their education at the accredited college, university or vocational-technical school of their choice on or before their 30th birthday or the remaining portion of their Express Ranches Progressive Junior Scholarship fund will be forfeited. There will be a third party advisory board administering the scholarships. The board will be appointed by Express in staggered terms. The current advisory board is: Kyle Haley, Jack Stuteville, Eddie Sims, Ryan Cotton and Sonny Booth.

This scholarship will be non-transferrable unless approved by the advisory board. Any questions or changes will be decided and or approved by the advisory board. The Express Ranches Scholarship Program will be audited annually.

### ELIGIBLE SHOWS

**Level I:** National Accredited Junior Show

**Level II:** Denver Junior Show; Louisville Junior Show; Kansas City Junior Show; Oklahoma City Spring Fair; Nationally Sanctioned Regional Heifer Shows; and one of the following Texas Junior shows, San Antonio, Fort Worth or Houston.

**Level III:** State Fair Junior Shows, State Fair shows will be honored for the persons in the state of origin. The state of origin is defined as the state of residence of the owners and or the state of your 4-H or FFA chapter. Only one state of origin showing will be rewarded per calendar year.

**Level IV:** State Junior Field Day & County Junior Shows. County shows will be honored for the persons in the county of origin. The county of origin is defined as the county of residence of the owners and or the county of your 4-H or FFA chapter. Only one county of origin showing will be rewarded.

*We may review the entire program annually. May each participant work hard, enjoy their cattle and win many scholarships for their future education.*



**It Takes BLUE  
To Win Purple**





2202 N. 11th Street  
Yukon, Oklahoma 73099

Presorted  
First Class  
US Postage  
**PAID**  
Slate Group

