



*The* **Big** *at Express*  
*Ranches*  
**Event**

**FRIDAY, AUGUST 19, 2016**

1:00 p.m. 206 Fall-Calving 2-Yr.-Olds & Cows Sell

6:00 p.m. Pre-sale Gala - Home of Bob Funk

7:00 p.m. Gala - Country Music Spectacular

**SATURDAY, AUGUST 20, 2016**

7:30 a.m. Coffee, Juice and Pastries

11:00 a.m. Big Event Sale - Live at Express Ranches

**BID LIVE BOTH DAYS:** [www.superiorlive.com](http://www.superiorlive.com) & [www.liveauctions.tv](http://www.liveauctions.tv)

**SALE-DAY SUPPLEMENT**



# Welcome to Express Ranches & the Big Event Angus Sale

LOT	UPDATED INFORMATION	LOT	UPDATED INFORMATION
4	Due 9/1 to 9/15 to EXAR Rest Easy 4710B	230	Checked Safe to Basin Advance 5016. Approx. due date 3/11/17
14	Recip 1884-Coll	310	Out of Sale
24	Recip 1882-Coll	310A	Out of Sale
28		320A	Sells as Commercial (white)
30A	Recip 1692-Coll	339A	Out of Sale
30AA	Out of Sale	516	Out of Sale
30B	Added 4 Embryos, Dam: GAR Sunrise 1482 Sire: EXAR Hi-Tech 4769B	525	Out of Sale
30C	Added 4 Embryos, Dam: GAR Sunrise 1482 Sire: WR Journey-1X74	550	Due from 9/20 to 10/31 to EXAR Impression 2046.
31	Recip R295TO	559	Due from 09/2 to 10/15 to Jacs Factor 3541
33	Out of Sale	561	Out of Sale
42	Due after 8/27 to 9/15 to EXAR It All Count 2219	579	Out of Sale
45	Out of Sale	583	Due from 09/2 to 10/15 to EXAR Denver 2002B
49	Due Either 9/2 to Rampage or after 9/10 to EXAR Prophet 4077.	593	Out of Sale
55	Out of Sale	599	Out of Sale
95	Out of Sale	634A	Correction of sire of Calf to AAR Ten X 7008
203	Correction of sire of Calf to EXAR Stud 4658B	677	Due Approx 8/31/2015 to EXAR Denver 2002B
218B	Checked Safe to Basin Advance 5016. Approx. due date 4/20/17	685	Out of Sale
218C	Checked Safe to Basin Advance 5016. Approx. due date 4/5/17	692	Out of Sale

## UPDATED WEANING WEIGHTS

LOT	ADJ. WW	LOT	ADJ. WW	LOT	ADJ. WW	LOT	ADJ. WW	LOT	ADJ. WW	LOT	ADJ. WW
15	595 lbs.	88	747 lbs.	114	775 lbs.	144	651 lbs.	314A	778 lbs.	340A	687 lbs.
17C	556 lbs.	89	684 lbs.	115	633 lbs.	145	555 lbs.	315A	632 lbs.	341A	711 lbs.
17D	540 lbs.	90	676 lbs.	116	600 lbs.	146	628 lbs.	316A	635 lbs.	341B	701 lbs.
17E	638 lbs.	91	616 lbs.	118	667 lbs.	147	589 lbs.	317A	690 lbs.	342A	657 lbs.
18	818 lbs.	92	680 lbs.	119	609 lbs.	148	595 lbs.	318A	713 lbs.	343A	673 lbs.
22A	690 lbs.	93	606 lbs.	120	608 lbs.	149	746 lbs.	319A	728 lbs.	344A	665 lbs.
22B	670 lbs.	94	651 lbs.	121	547 lbs.	150	607 lbs.	320A	685 lbs.	345A	662 lbs.
23A	650 lbs.	96	738 lbs.	122	561 lbs.	151	619 lbs.	321A	756 lbs.	346A	710 lbs.
23B	675 lbs.	97	678 lbs.	123	521 lbs.	152	654- lbs.	322A	734 lbs.	347A	622 lbs.
23C	685 lbs.	98	646 lbs.	124	631 lbs.	153	649 lbs.	323A	771 lbs.	348A	709 lbs.
24A	688 lbs.	99	681 lbs.	125	685 lbs.	154	758 lbs.	324A	756 lbs.	349A	632 lbs.
24B	634 lbs.	100	675 lbs.	126	698 lbs.	206A	642 lbs.	325A	753 lbs.	350A	747 lbs.
24C	792 lbs.	101	634 lbs.	127	690 lbs.	300A	736 lbs.	326A	789 lbs.	351A	722 lbs.
25B	741 lbs.	102	776 lbs.	128	613 lbs.	301A	727 lbs.	327A	766 lbs.	352A	734 lbs.
25C	605 lbs.	103	647 lbs.	129	644 lbs.	302A	775 lbs.	328A	671 lbs.	353A	739 lbs.
29	775 lbs.	104	653 lbs.	130	560 lbs.	303A	685 lbs.	329A	730 lbs.	354A	699 lbs.
32	735 lbs.	105	681 lbs.	131	685 lbs.	304A	721 lbs.	330A	679 lbs.	355A	782 lbs.
74	550 lbs.	106	694 lbs.	136	597 lbs.	305A	689 lbs.	331A	731 lbs.	356A	711 lbs.
85A	592 lbs.	107	655 lbs.	137	643 lbs.	306A	668 lbs.	332A	716 lbs.	357A	720 lbs.
85B	679 lbs.	108	671 lbs.	138	681 lbs.	307A	708 lbs.	333A	677 lbs.	358A	755 lbs.
85C	652 lbs.	109	647 lbs.	139	658 lbs.	308A	692 lbs.	334A	703 lbs.	359A	662 lbs.
85D	623 lbs.	110	653 lbs.	140	589 lbs.	309A	645 lbs.	335A	687 lbs.	360A	634 lbs.
86A	640 lbs.	111	638 lbs.	141	653 lbs.	311A	724 lbs.	336A	735 lbs.	361A	649 lbs.
86B	653 lbs.	112	629 lbs.	142	593 lbs.	312A	727 lbs.	337A	694 lbs.		
87	619 lbs.	113	658 lbs.	143	695 lbs.	313A	730 lbs.	338A	640 lbs.		

## — UPDATED CALVING INFORMATION —

LOT	TATTOO	REG#	BIRTH DATE	SEX	SIRE'S NAME	ACT. BW	GED	BW	WW	MILK	YW	CW	MARB	REA	\$B
1	6315	18517631	8/11/16	C	EXAR Stud 4658B	61	11	0.2	65	35	115	52	0.82	0.83	162.90
2	6316B	18511263	7/30/16	B	WR Journey-1X74	63	12	-1.4	67	28	117	57	0.91	0.88	172.72
3	6316	18517632	8/10/16	C	WR Journey-1X74	61	10	-0.4	72	32	124	57	1.01	1.09	174.69
5	6348	18516832	7/22/16	C	3F Epic 4631	60	8	0.6	72	30	128	51	0.58	0.79	144.14

**— UPDATED CALVING INFORMATION —**

LOT	TATTOO	REG#	BIRTH DATE	SEX	SIRE'S NAME	ACT. BW	CED	BW	WW	MILK	YW	CW	MARB	REA	\$B
6	6159	18506267	7/13/16	C	EXAR Stud 4658B	50	12	1.2	61	32	110	59	0.80	0.92	172.68
25	6310	Pending	8/17/2016	C	Sitz Top Game 561X	67									
26	6312	Pending	8/16/16	C	Sitz Top Game 561X	65									
27	6291B	Commercial	8/13/16	B	Sitz Top Game 561X	74									
34	6326B	18511272	7/25/16	B	EXAR Stud 4658B	60	10	1.1	65	30	115	48	0.86	0.85	157.14
35	6156	18506264	7/11/16	C	EXAR EZX 3772B	50	9	1.5	52	29	101	42	0.91	0.65	145.14
36	6324B	18511270	7/26/16	B	EXAR Stud 4658B	69	6	1.9	61	34	115	54	0.96	1.01	167.30
37	6311B (twin)	18511262	7/22/16	B	Quaker Hill Rampage 0A36	51	7	2.3	77	30	140	71	0.73	1.24	190.12
37	6335 (twin)	Free Martin	7/22/16	C	Quaker Hill Rampage 0A36	47									
38	6309	Pending	8/17/2016	C	Quaker Hill Rampage 0A36	61									
39	6300B	18519054	8/7/16	B	EXAR Stud 4658B	60	11	0.4	62	37	116	44	1.23	0.81	157.63
40	6292B	Pending	8/12/16	B	Quaker Hill Rampage 0A36	77	12	0.9	75	36	134	58	0.94	1.14	173.36
43	6331B	18517788	7/22/16	B	Quaker Hill Rampage 0A36	73	7	2.2	76	33	132	66	0.74	1.33	185.69
44	6313	18518862	8/13/16	C	EXAR Stud 4658B	57	9	0.7	61	32	115	58	0.86	1.14	171.16
46	6175B	18506287	7/19/16	B	EXAR Stud 4658B	60	6	1.3	66	30	113	55	0.89	0.69	170.19
47	6172B	18506284	7/18/16	B	EXAR Stud 4658B	58	10	1.2	59	32	108	47	1.01	0.70	157.67
48	6305B	18515325	8/5/16	B	EXAR Stud 4658B	58	4	1.8	61	26	111	52	0.94	0.72	169.55
50	6340B	18506297	7/21/16	B	WR Journey-1X74	57	7	1.0	65	30	111	54	0.83	1.11	168.95
132	6174	18517854	7/23/16	C	PVF Insight 0129	73	2	3.0	59	28	102	36	0.27	0.81	119.07
133	6172	18506283	7/22/16	C	C&C McKinley 3000 EXAR	72									
201	6321B	18511268	7/30/16	B	EXAR Resistol 3710B	67	11	0.1	61	27	102	50	0.47	0.74	141.58
202	6169B	18506279	7/12/16	B	EXAR Resistol 3710B	65	10	0.5	63	26	105	51	0.58	0.90	144.53
203	6330B	18506290	7/23/16	B	EXAR Stud 4658B	76	6	1.5	59	29	106	52	1.00	0.73	156.31
204	6173	18506285	7/22/16	C	EXAR Stud 4658B	68	5	1.5	63	31	112	49	0.90	0.74	153.92
206	6296B	18517627	8/10/16	B	Sitz Top Game 561X	76	3	2.6	64	26	116	49	0.87	1.19	163.83
208	6299B	18515322	8/8/16	B	Sitz Top Game 561X	63	6	2.4	64	35	113	40	0.83	1.13	139.45
209	6165	18506273	7/16/16	C	Sitz Top Game 561X	70	6	2.0	58	29	110	43	0.85	1.09	148.62
210	6294B	18517625	8/12/16	B	WR Journey-1X74	48	12	-1.1	64	28	111	53	0.96	0.95	169.98
214	6295B	18517626	8/10/16	B	Sitz Top Game 561X	72	7	1.8	60	35	114	46	0.65	1.22	149.64
501	6272B	18511259	7/21/16	B	EXAR Stud 4658B	70	9	1.4	62	31	109	47	0.89	0.87	154.51
502	6267	18511256	7/19/16	C	EXAR Stud 4658B	70	8	1.7	61	32	109	47	1.01	0.69	159.03
503	6266	18511255	7/17/16	C	EXAR Resistol 3710B	63	10	1.4	67	28	109	57	0.62	0.95	150.70
504	6263	18511253	7/15/16	C	EXAR EZX 3772B	56	10	1.1	55	30	105	40	0.85	0.62	137.58
505	6273B	18511260	7/26/16	B	WR Journey-1X74	67	11	-1.0	66	30	114	57	0.82	1.09	170.49
506	6271B	18511258	7/14/16	B	EXAR Resistol 3710B	65	11	1.5	66	30	111	54	0.63	0.85	146.26
507	6275B	18518860	8/13/16	B	Quaker Hill Rampage 0A36	67	12	1.1	72	33	130	63	0.63	1.31	173.70
508	6265	18511254	7/16/16	C	Quaker Hill Rampage 0A36	65	11	0.9	67	29	127	67	0.73	1.35	181.82
509	6269 (twin)	18518857	8/10/16	C	EXAR X-Man 3758B	51	11	0.7	56	26	105	41	0.99	0.65	146.11
509	6270 (twin)	18518858	8/10/16	C	EXAR X-Man 3758B	53	11	0.7	56	26	105	41	0.99	0.65	146.11
510	6262	18511252	7/12/16	C	EXAR X-Man 3758B	67	12	0.3	53	29	98	37	1.14	0.59	137.68
515	6271	18518859	8/14/16	C	WR Journey-1X74	61	11	-0.2	65	24	111	48	0.44	1.06	150.72
517	6274B	18511261	7/27/16	B	EXAR Stud 4658B	71	9	0.8	61	31	106	51	0.89	0.76	162.93
518	6270B	18511257	7/11/16	B	WR Journey-1X74	79	12	-0.7	62	30	107	52	0.82	1.20	161.83
519	6268	18517623	8/8/16	C	Quaker Hill Rampage 0A36	67									
521	6272	Pending	8/16/2016	C	WR Journey-1X74	59									
522	6261	18511251	7/8/16	C	WR Journey-1X74	52	7	0.3	60	26	105	49	0.75	0.83	155.64
524	6342B	18506299	7/21/16	B	EXAR Untapped 4710B	64	12	0.8	57	27	104	37	0.75	0.60	120.53
526	6309B	18515723	8/3/16	B	EXAR Untapped 4710B	73	9	1.9	56	22	98	40	0.71	0.57	135.03

**— UPDATED CALVING INFORMATION —**

LOT	TATTOO	REG#	BIRTH DATE	SEX	SIRE'S NAME	ACT. BW	CED	BW	WW	MILK	YW	CW	MARB	REA	\$B
531	6289B	Pending	8/16/16	B	EXAR Untapped 4710B	76									
532	6322B	18513710	7/27/16	B	EXAR Untapped 4710B	63	8	1.3	58	27	104	41	0.64	0.61	120.59
533	6173B	18516815	7/16/16	B	EXAR Resistol 3710B	60	6	1.7	61	25	104	48	0.50	0.74	135.82
534	6288B	Pending	8/16/16	B	EXAR Rest Easy 4701B	50									
537	6350B	18513711	7/19/16	B	EXAR PowerSource 4723B	65	12	0.6	61	31	105	26	1.05	0.53	118.04
538	6304B	18515324	8/4/16	B	A A R Ten X 7008 S A	79	4	1.8	63	30	111	48	0.97	0.75	151.12
539	6338B	18506295	7/22/16	B	WR Journey-1X74	66	8	0.3	61	29	106	45	0.90	0.87	155.66
540	6336B	18506294	7/22/16	B	WR Journey-1X74	56	14	-1.2	56	26	99	47	0.83	1.06	154.62
541	6337B	18510128	7/22/16	B	Quaker Hill Rampage 0A36	67	12	1.0	69	30	127	60	0.60	1.26	168.42
542	6339B	18506296	7/22/16	B	3F Epic 4631	59	11	-0.4	65	27	121	47	0.67	0.66	146.94
543	6160	18506268	7/13/16	C	EXAR Denver 2002B	65	3	3.0	60	29	108	50	0.59	0.87	149.29
544	6319	18517634	8/9/16	C	3F Epic 4631	65	13	-0.7	61	28	110	45	0.66	0.45	139.54
546	6164	18506272	7/16/16	C	WR Journey-1X74	56	12	-0.8	60	27	106	54	1.03	1.16	174.13
547	6319B	18511266	7/27/16	B	Quaker Hill Rampage 0A36	75	6	2.4	69	32	125	60	0.55	1.51	170.76
548	6325B	18511271	7/25/16	B	Quaker Hill Rampage 0A36	69	8	1.8	72	30	130	61	0.41	1.39	166.70
549	6174B	18506286	7/18/16	B	Quaker Hill Rampage 0A36	65	9	1.7	71	32	129	59	0.52	1.32	162.87
551	6166	18506274	7/18/16	C	Sitz Top Game 561X	56	7	1.9	56	29	102				
552	6158	18506266	7/12/16	C	EXAR Denver 2002B	59	10	1.9	58	28	102	36	0.71	0.91	127.86
553	6341	18511276	7/31/16	C	EXAR Denver 2002B	60	12	0.7	57	30	99	30	0.72	0.79	118.15
554	6318B	18511265	7/30/16	B	EXAR Resistol 3710B	80	7	1.8	62	22	108	48	0.57	0.84	135.21
555	6171	18506281	7/22/16	C	WR Journey-1X74	65	12	-0.9	63	25	103	49	0.56	1.06	154.73
556	6162	18506270	7/15/16	C	WR Journey-1X74	59	13	-1.2	57	28	100	46	0.66	1.12	152.80
557	6317B	18511264	7/30/16	B	WR Journey-1X74	74	10	-0.7	63	25	109	55	0.99	1.11	174.05
560	6343B	18506300	7/21/16	B	EXAR Stud 4658B	71	12	0.1	57	33	105	43	1.28	0.77	158.72
562	6287B	Pending	8/17/2016	B	EXAR Stud 4658B	55									
563	6297B	18517628	8/10/16	B	Sitz Top Game 561X	70	6	1.6	55	30	100	37	0.92	1.18	137.78
564	6345B	18506302	7/21/16	B	PVF Insight 0129	67	5	2.2	54	33	95	34	0.32	0.67	114.89
566	6348B	18506305	7/19/16	B	EXAR Denver 2002B	65	10	1.5	57	32	105	47	0.65	0.85	143.09
567	6314	18517630	8/11/16	C	EXAR Turning Point 3510B	62	-4	4.2	51	24	88	26	0.35	0.55	96.07
568	6170	18506280	7/21/16	C	PVF Insight 0129	63	4	2.0	55	33	99	28	0.26	0.64	104.71
569	6323B	18511269	7/26/16	B	Quaker Hill Rampage 0A36	80	9	0.8	65	34	120	59	0.54	1.41	167.87
572	6171B	18506282	7/17/16	B	Connealy Consensus 7229	60	5	1.6	51	25	97	23	0.90	0.70	107.87
573	6293B	18517624	8/12/16	B	EXAR Resistol 3710B	77	9	0.9	55	22	99	47	0.58	0.67	139.02
574	6335B	18506293	7/22/16	B	EXAR Resistol 3710B	65	8	1.1	62	29	103	48	0.46	0.67	137.44
576	6333B	18506291	7/22/16	B	EXAR Combination 1750B	57	10	-0.2	52	28	96	37	0.84	0.65	131.04
578	6169	18506278	7/21/16	C	EXAR Denver 2002B	65	9	2.2	60	28	103	47	0.87	1.11	149.96
579	6168	18506276	7/20/16	C	PVF Insight 0129	68	10	1.2	48	33	99	35	0.65	0.92	129.21
582	6329B	18510116	7/24/16	B	Quaker Hill Rampage 0A36	79	8	1.8	71	31	124				
584	6344B	18506301	7/21/16	B	WR Journey-1X74	70	12	-1.2	58	25	102	43	0.75	0.85	145.83
601	6326	18515327	8/6/16	C	EXAR Impression 1489B	58	3	2.6	46	22	87	25	0.44	0.98	107.90
615	6345	18511279	7/25/16	C	A A R Ten X 7008 S A	66	8	1.0	56	27	105	40	0.90	0.58	137.30
616	6157	18506265	7/11/16	C	EXAR Resistol 3710B	56	8	1.9	64	26	111	53	0.59	0.76	147.54
617	6310B	18515326	8/4/16	B	WR Journey-1X74	68	9	-0.1	62	29	107	55	0.75	1.11	165.06
618	6334B	18506292	7/22/16	B	WR Journey-1X74	69	10	-0.7	61	28	103	42	0.75	0.91	143.91
621	6175	18510122	7/24/16	C	Quaker Hill Rampage 0A36	70	7	1.9	73	32	134	63	0.51	1.46	173.83
622	6343	18512475	7/27/16	C	Quaker Hill Rampage 0A36	60	10	1.3	68	32	123	63	0.45	1.49	169.88
623	6286B	Pending	8/17/2016	B	Quaker Hill Rampage 0A36	64									
624	6332B	18510120	7/22/16	B	Quaker Hill Rampage 0A36	70	8	1.6	71	29	125	59	0.50	1.34	164.58
625	6163	18506271	7/15/16	C	Quaker Hill Rampage 0A36	58	12	1.1	63	28	116	58	0.62	1.37	165.06

— **UPDATED CALVING INFORMATION** —

LOT	TATTOO	REG#	BIRTH DATE	SEX	SIRE'S NAME	ACT. BW	CED	BW	WW	MILK	YW	CW	MARB	REA	\$B
626	6347B	18510063	7/19/16	B	A A R Ten X 7008 S A	69	7	0.3	58	30	112	59	0.79	0.77	160.41
628	6338	18512473	8/1/16	C	Quaker Hill Rampage 0A36	67	10	0.2	66	28	120	59	0.49	1.24	168.40
629	6349B	18506307	7/18/16	B	Connealy Consensus 7229	88	-4	3.1	55	31	96	33	0.90	0.84	126.67
630	6320	18517635	8/9/16	C	EXAR PowerSource 4723B	56	6	2.4	57	32	102	42	1.03	0.68	141.11
631	6161	18506269	7/15/16	C	Connealy Consensus 7229	60	4	2.1	53	25	91	23	0.71	0.48	98.04
634	6350	18510070	7/24/16	C	A A R Ten X 7008 S A	67	9	0.9	61	25	113	35	0.93	0.58	138.40
635	6346B	18506304	7/18/16	B	EXAR Denver 2002B	80	6	2.9	55	31	100	31	0.47	0.51	109.42
636	6167	18506275	7/19/16	C	EXAR Denver 2002B	61	9	1.6	56	32	102	39	0.76	0.45	126.87
637	6320B	18511267	7/27/16	B	EXAR Denver 2002B	74	9	1.8	58	30	105	44	0.65	0.89	142.60
638	6311	Pending	8/17/2016	C	EXAR Denver 2002B	78									
668	6325	18519057	8/7/16	C	EXAR Stud 4658B	70	10	0.1	60	29	108	45	0.96	0.64	150.45
669	6331	18519055	8/5/16	C	EXAR Stud 4658B	58	7	1.7	53	23	97	37	0.97	0.74	138.61
672	6328	18516811	8/5/16	C	EXAR Stetson 3704B	69	5	1.8	61	26	106	45	0.70	0.84	130.73
674	6314B	18519011	7/30/16	B	EXAR Denver 2002B	71	7	2.2	58	31	104	35	0.66	0.77	122.45
675	6340 (twin)	18516810	7/31/16	C	EXAR Stetson 3704B	63	8	1.1	58	25	103	41	0.72	0.88	135.56
675	6339 (twin)	18516809	7/31/16	C	EXAR Stetson 3704B	51	8	1.1	58	25	103	41	0.72	0.88	135.56
676	6329	18516776	8/5/16	C	EXAR Denver 2002B	60	10	1.5	56	26	100	36	0.69	0.80	127.59
679	6301B	18516773	8/8/16	B	EXAR Denver 2002B	61	11	0.8	60	35	106	32	0.63	0.99	120.20
681	6332	18519050	8/4/16	C	EXAR PowerSource 4723B	67	8	2.1	58	30	101	44	0.93	0.94	148.54
683	6313B	18516813	7/31/16	B	EXAR Stetson 3704B	67	12	-0.5	56	26	101	44	0.59	1.03	133.72
686	6315B	18516812	7/31/16	B	EXAR Stetson 3704B	60	10	0.7	58	28	106	45	0.84	0.86	143.66
687	6312B	18516808	8/2/16	B	EXAR Stetson 3704B	54	6	1.0	55	28	99	38	0.74	0.75	125.34
689	6306B	18516816	8/5/16	B	EXAR Stetson 3704B	62	8	0.6	55	28	97	39	0.52	0.74	121.71
691	6318X	18519051	8/9/16	C	EXAR PowerSource 4723B	60	3	2.6	53	27	96	38	0.93	0.69	134.43
693	6308B	18516830	8/5/16	B	EXAR PowerSource 4723B	62	7	2.4	58	31	104	39	1.07	0.65	136.02
695	6327	18519060	8/6/16	C	EXAR Stud 4658B	61	9	0.7	56	25	104	55	0.98	1.05	169.19
696	6302B (twin)	18517873	8/4/16	B	Quaker Hill Rampage 0A36	61	6	1.7	69	32	125	59	0.47	1.23	165.72
696	6330 (twin)	Free Martin	8/4/16	C	Quaker Hill Rampage 0A36	59									
697	6321	Pending	8/8/16	C	EXAR PowerSource 4723B	63									
698	6322	18516819	8/8/16	C	EXAR Resistol 3710B	62	10	1.2	58	23	98	31	0.56	0.68	112.39
702	6307B	18516814	8/5/16	B	EXAR Stetson 3704B	61	9	1.4	54	21	95	46	0.71	0.80	145.58
704	6323	18519043	8/7/16	C	EXAR Resistol 3710B	68	10	0.7	62	23	101	33	0.58	0.81	120.62
705	6333X	18519041	8/2/16	C	EXAR Resistol 3710B	64	11	0.6	62	22	100	32	0.59	0.82	117.01

## *Upcoming EX Sales*

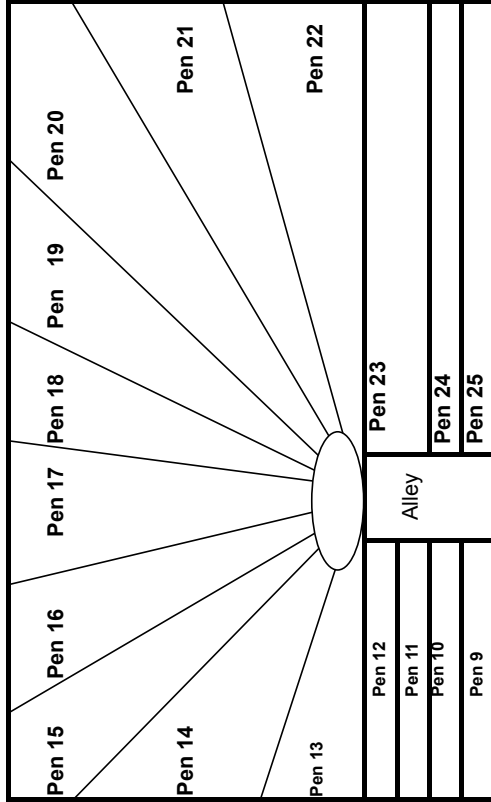
**Plan to join us for these events.**

<b>OCTOBER 3</b> ... EX Fall Bull Sale	<b>MARCH 2017</b> ... EX Honor Roll Sale March
<b>OCTOBER 16</b> ... EX Hereford Event	<b>MARCH 2017</b> ... EX New Mexico Bull Sale, Newkirk, NM
<b>MARCH 3</b> ... EX Spring Bull Sale	<b>APRIL 2017</b> ... EX Grass Time Sale



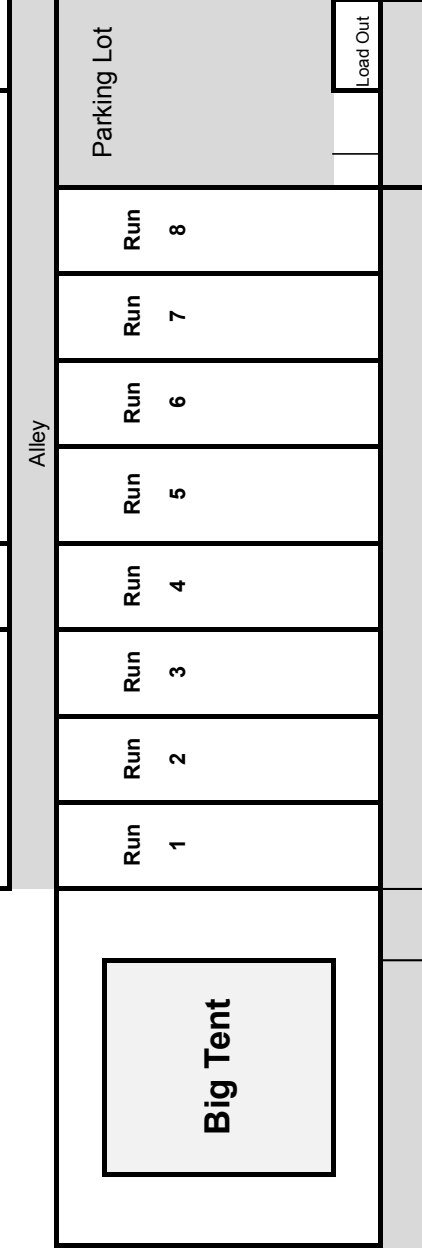
— 2016 EX BIG EVENT LOT FINDER —

LOT	LOCATION	LOT	LOCATION	LOT	LOCATION	LOT	LOCATION	LOT	LOCATION	LOT	LOCATION	LOT	LOCATION				
1	D1	50	D10	101	SB	205C	Run 3	313	Pen 14	343A	Pen 16	527	Iron 30	590	HTL 2	652	Pivot
2	D1	51	D11	102	SB	206	Run 5	313A	Pen 14	344	Pen 16	528	Iron 30	591	HTL 2	653	Pivot
3	D1	52	D11	103	SB	206A	Run 5	314	Pen 14	344A	Pen 16	529	Iron 30	592	HTL 2	654	Pivot
4	D1	53	D11	104	SB	207	Run 5	314A	Pen 14	345	Pen 16	530	Iron 30	594	HTL 2	655	Pivot
5	D1	54	D11	105	SB	208	Run 5	315	Pen 14	345A	Pen 16	531	Iron 31	595	HTL 2	656	Pivot
6	Tent	56	D11	106	SB	209	Run 5	315A	Pen 14	346	Pen 16	532	Iron 31	596	HTL 2	657	Pivot
7	Tent	57A	D11	107	SB	210	Run 6	316	Pen 14	346A	Pen 16	533	Iron 31	597	HTL 2	658	Pivot
8	D2	57B	D11	108	SB	211	Run 6	316A	Pen 14	347	Pen 16	534	Iron 31	598	HTL 2	659	Pivot
9	D2	58	D12	109	SB	212	Run 6	317	Pen 14	347A	Pen 16	535	Iron 31	599	HTL 2	660	Pivot
10	Tent	59A	D12	110	SB	213	Run 6	317A	Pen 14	348	Pen 17	536	Iron 31	600	HTL 2	661	Pivot
11	D2	59B	D12	111	SB	214	Run 6	318	Pen 14	348A	Pen 17	537	Iron 31	601	HTL 2	662	Pivot
12	D2	59C	D12	112	SB	215	Run 6	318A	Pen 14	349	Pen 17	538	Iron 32	602	HTL 2	663	Pivot
13	D2	60A	D12	113	SB	216	Run 6	319	Pen 14	349A	Pen 17	539	Iron 32	603	HTL 2	664	Pivot
15	Tent	60B	D12	114	SB	217	Run 7	319A	Pen 14	350	Pen 17	540	Iron 32	604	HTL 2	665	Pivot
16	Tent	61A	D12	115	SB	218A	Run 7	320	Pen 14	350A	Pen 17	541	Iron 32	605	HTL 2	666	Pivot
17	D3	61B	D12	116	SB	218B	Run 7	320A	Pen 14	351	Pen 17	542	Iron 32	606	HTL 2	667	Pivot
17B	D3	62	Pen 9	117	Run 2	218C	Run 7	321	Pen 15	351A	Pen 17	543	Iron 32	607	Pivot	668	HTL 3
17C	D3	63	Pen 9	118	SB	218D	Run 7	321A	Pen 15	352	Pen 17	544	Iron 32	608	Pivot	669	HTL 3
17D	D3	64	Pen 9	119	SB	219	Run 7	322	Pen 15	352A	Pen 17	545	HTL 1	609	Pivot	670	HTL 3
17E	D3	65	Pen 9	120	SB	220	Run 7	322A	Pen 15	353	Pen 17	546	HTL 1	610	Pivot	671	HTL 3
18	Tent	66	Pen 9	121	SB	221	Run 7	323	Pen 15	353A	Pen 17	547	HTL 1	611	Pivot	672	HTL 3
19	D4	67A	Pen 9	122	SB	222	Run 7	323A	Pen 15	354	Pen 17	548	HTL 1	612	Pivot	673	HTL 3
20	D4	67B	Pen 9	123	SB	223	Run 8	324	Pen 15	354A	Pen 17	549	HTL 1	613	Pivot	674	HTL 3
21A	D4	68	PEN 10	124	SB	224	Run 8	324A	Pen 15	355	Pen 17	550	HTL 1	614	Pivot	675	HTL 3
21B	D4	69	PEN 10	125	SB	225	Run 8	325	Pen 15	355A	Pen 17	551	HTL 1	615	HTL 2	676	HTL 3
22A	D5	70	PEN 10	126	SB	226	Run 8	325A	Pen 15	356	Pen 17	552	HTL 1	616	HTL 2	677	HTL 3
22B	D5	71	PEN 10	127	SB	227	Run 8	326	Pen 15	356A	Pen 17	553	HTL 1	617	HTL 2	678	HTL 3
23A	D5	72	PEN 10	128	SB	228	Run 8	326A	Pen 15	357	Pen 17	554	HTL 1	618	HTL 2	679	HTL 3
23B	D5	73	PEN 10	129	SB	229	Run 8	327	Pen 15	357A	Pen 17	555	HTL 1	619	HTL 2	680	HTL 3
23C	D5	74	PEN 10	130	SB	230	Run 8	327A	Pen 15	358	Pen 17	556	HTL 1	620	HTL 2	681	HTL 3
24A	D5	75	PEN 10	131	SB	231	Pen 12	328	Pen 15	358A	Pen 17	557	HTL 1	621	HTL 2	682	HTL 3
24B	D5	76	PEN 10	132	Run 2	232	Pen 12	328A	Pen 15	359	Pen 17	558	HTL 1	622	HTL 2	683	HTL 3
24C	D5	77	PEN 11	133	Run 2	233	Pen 12	329	Pen 15	359A	Pen 17	559	HTL 1	623	HTL 2	684	HTL 3
25	D7	78	PEN 11	134	Run 2	234	Pen 12	329A	Pen 15	360	Pen 17	560	HTL 1	624	HTL 2	686	HTL 3
25A	D7	79	PEN 11	135	Run 2	235	Pen 12	330	Pen 15	360A	Pen 17	562	HTL 1	625	HTL 2	687	HTL 3
25B	D7	80	PEN 11	136	SB	236	Pen 12	330A	Pen 15	361	Pen 17	563	HTL 1	626	HTL 2	688	HTL 3
25C	D7	81	PEN 11	137	SB	237	Pen 12	331	Pen 15	361A	Pen 17	564	HTL 1	627	HTL 2	689	HTL 3
26	D7	82A	PEN 11	138	SB	300	Pen 13	331A	Pen 15	501	Iron 27	565	HTL 1	628	HTL 2	690	HTL 3
26A	D7	82B	PEN 11	139	SB	300A	Pen 13	332	Pen 15	502	Iron 27	566	HTL 1	629	HTL 2	691	HTL 3
26B	D7	83	PEN 11	140	SB	301	Pen 13	332A	Pen 15	503	Iron 27	567	HTL 1	630	HTL 2	693	HTL 3
26C	D7	84	PEN 11	141	SB	301A	Pen 13	333	Pen 15	504	Iron 27	568	HTL 1	631	HTL 2	694	HTL 3
26D	D7	85	Tent	142	SB	302	Pen 13	333A	Pen 15	505	Iron 27	569	HTL 1	632	HTL 2	695	HTL 3
27	D7	85A	Tent	143	SB	302A	Pen 13	334	Pen 16	506	Iron 27	570	HTL 1	633	HTL 2	696	HTL 3
29	Tent	85B	Tent	144	SB	303	Pen 13	334A	Pen 16	507	Iron 27	571	HTL 1	634	HTL 2	697	HTL 3
30	Tent	85C	Tent	145	SB	303A	Pen 13	335	Pen 16	508	Iron 27	572	HTL 1	635	HTL 2	698	HTL 3
32	Tent	85D	Tent	146	SB	304	Pen 13	335A	Pen 16	509	Iron 28	573	HTL 1	636	HTL 2	699	HTL 3
34	D8	86A	Run 1	147	SB	304A	Pen 13	336	Pen 16	510	Iron 28	574	HTL 1	637	HTL 2	700	HTL 3
35	D8	86B	Run 1	148	SB	305	Pen 13	336A	Pen 16	511	Iron 28	575	HTL 1	638	HTL 2	701	HTL 3
36	D8	87	Run 1	149	SB	305A	Pen 13	337	Pen 16	512	Iron 28	576	HTL 1	639	Pivot	702	HTL 3
37	D8	88	Run 1	150	SB	306	Pen 13	337A	Pen 16	513	Iron 28	577	HTL 1	640	Pivot	703	HTL 3
38	D8	89	Run 1	151	SB	306A	Pen 13	338	Pen 16	514	Iron 28	578	HTL 1	641	Pivot	704	HTL 3
39	D8	90	Tent	152	SB	307	Pen 13	338A	Pen 16	515	Iron 28	580	HTL 1	642	Pivot	705	HTL 3
40	D8	91	Run 1	153	SB	307A	Pen 13	339	Pen 16	517	Iron 29	581	HTL 1	643	Pivot	706	HTL 3
41	D9	92	Tent	154	SB	308	Pen 14	340	Pen 16	518	Iron 29	582	HTL 1	644	Pivot		
42	D9	93	Run 1	201	Tent	308A	Pen 14	340A	Pen 16	519	Iron 29	583	HTL 1	645	Pivot		
43	D9	94	Run 1	202	Tent	309	Pen 14	341	Pen 16	520	Iron 29	584	HTL 1	646	Pivot		
44	D9	96	Run 1	203	Run 3	309A	Pen 14	341A	Pen 16	521	Iron 29	585	HTL 2	647	Pivot		
46	D10	97	Run 1	204	Run 3	311	Pen 14	341B	Pen 16	522	Iron 29	586	HTL 2	648	Pivot		
47	D10	98	Run 1	205	Run 3	311A	Pen 14	342	Pen 16	523	Iron 29	587	HTL 2	649	Pivot		
48	D10	99	Run 1	205A	Run 3	312	Pen 14	342A	Pen 16	524	Iron 30	588	HTL 2	650	Pivot		
49	D10	100	SB	205B	Run 3	312A	Pen 14	343	Pen 16	526	Iron 30	589	HTL 2	651	Pivot		



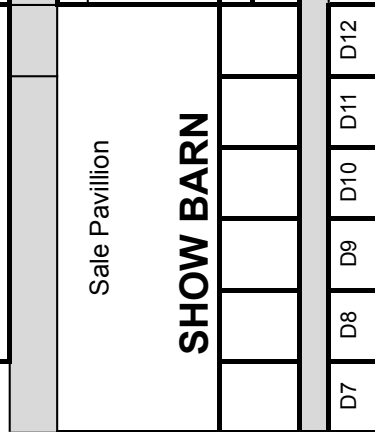
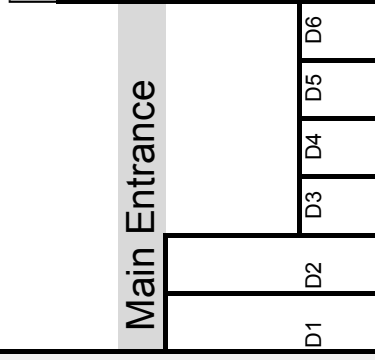
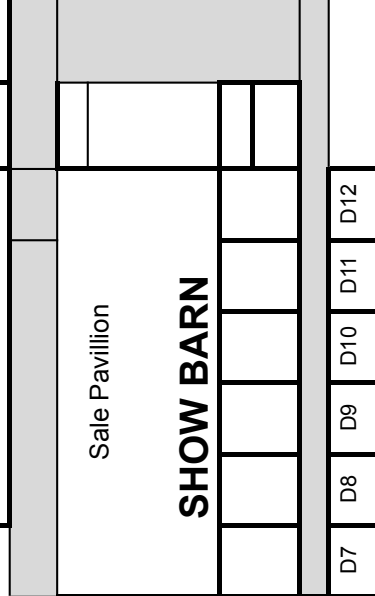
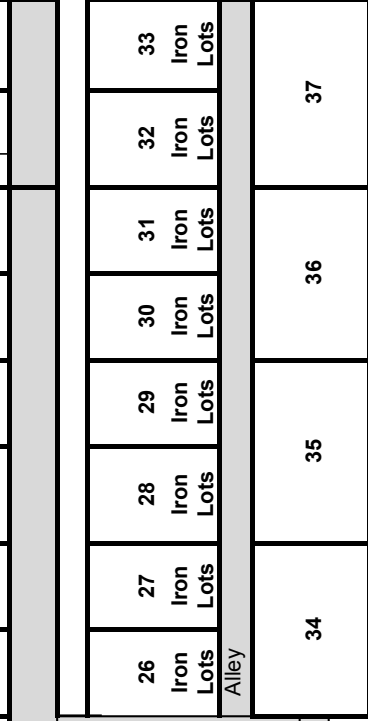
Ranch Offices

HLT 1 HLT 2 HLT 3



**LEGEND**

ANX	ANNEX
BGT	BIG TENT
GDN	GARDEN
GT	GARDEN TENTS
PVT	PIVOT PEN
SB	SHOW BARN



## EX Big Event Sale Order

— FRIDAY —

LOTS 501 to 706  
IN NUMERICAL ORDER

— SATURDAY —

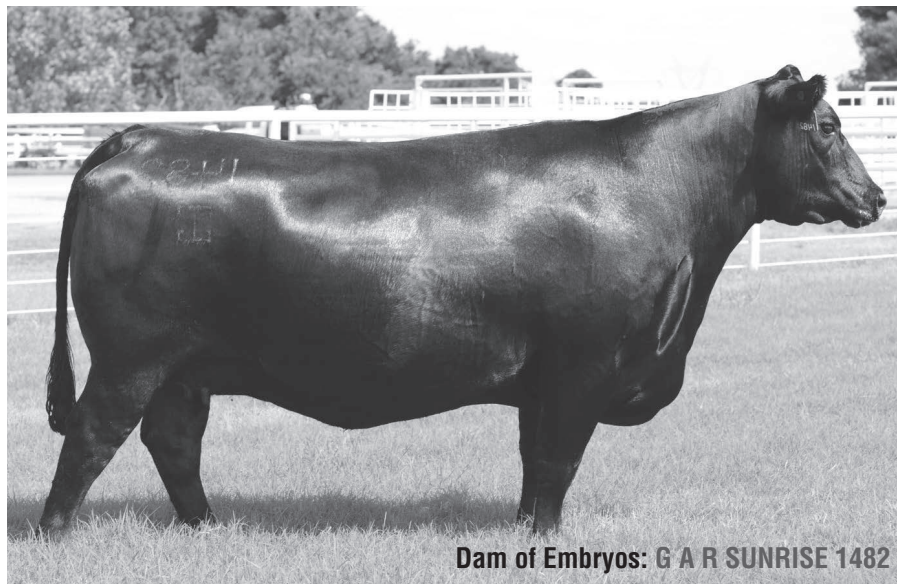
LOTS 1 to 99  
IN NUMERICAL ORDER

### SHOW-HEIFER SALE ORDER

102	110
104	108
127	106
120	124
126	152
100	130
142	129
141	118
107	119
	113
109	121
111	151
103	146
122	136
116	137
105	148
112	147
150	144
115	128
101	131
125	140
	143
117	139
132 & CALF	153
133 & CALF	138
134	114
135	123
	154
	145
	149

LOTS 200 to 237  
LOTS 300-361  
IN NUMERICAL ORDER

*Added Embryos from the famed  
G A R Sunrise 1482 donor  
Sat., August 20*



Dam of Embryos: G A R SUNRISE 1482

*Lot  
30B*

### 4 FROZEN EMBRYOS

B/R Future Direction 4268  
SIRE: WR JOURNEY-1X74 (DDF)  
2 Bar 5050 New Design 7831

G A R Sunrise  
DAM: G A R SUNRISE 1482 (DDF)  
G A R 5050 New Design T179

Sire's EPDs - current as of 8/15/2016

CED	BW	WW	YW	MILK	CW	MARB	REA	\$B
+13	-1.8	+67	+113	+29	+64	+87	+1.36	+189.93

Dam's EPDs

CED	BW	WW	YW	MILK	CW	MARB	REA	\$B
+7	+2.2	+53	+97	+26	+46	+99	+1.04	+161.80



Sire of Lot 30B: WR JOURNEY-1X74

*Lot  
30C*

### 4 FROZEN EMBRYOS

A A R Ten X 7008 S A  
SIRE: EXAR HI-TECH 4769B  
EXAR Rita U049

G A R Sunrise  
DAM: G A R SUNRISE 1482 (DDF)  
G A R 5050 New Design T179

Sire's EPDs - current as of 8/15/2016

CED	BW	WW	YW	MILK	CW	MARB	REA	\$B
+12	+1.5	+70	+129	+25	+74	+76	+84	+191.88

Dam's EPDs

CED	BW	WW	YW	MILK	CW	MARB	REA	\$B
+7	+2.2	+53	+97	+26	+46	+99	+1.04	+161.80



Sire of Lot 30B: EXAR HI-TECH 4769B

*Join Us Both Days: Fri. August 19 & Sat. August 20*



**BID LIVE...**

FRI.: RURAL TV (Dish 232)

SAT.: RURAL TV (Dish 232)

BOTH DAYS: [www.liveauctions.tv](http://www.liveauctions.tv)



Bob Funk, Owner  
Jarold Callahan, President  
2202 N. 11th St. | Yukon, OK 73099  
800-664-3977 | 405-350-0044  
[www.expressranches.com](http://www.expressranches.com)